



Cambridge Waste Water Treatment Plant Relocation Project  
Anglian Water Services Limited

# Appendix 13.3: Historic Landscape Characterisation

Application Document Reference: 5.4.13.3

PINS Project Reference: WW010003

APFP Regulation No. 5(2)a

Revision No.  
~~April~~ September 2023



~~love every drop~~  
~~anglianwater~~

## Document Control

Document title	Historic Landscape Characterisation
Version No.	<del>01</del> 02
Date Approved	<del>30.01.23</del> 29.09.23
Date 1 <sup>st</sup> Issued	30.01.23

## Version History

Version	<del>Version</del> -Date	Author	Description of change
<u>01</u>	<del>01</del> —30.01.23	-	DCO Submission
<u>02</u>	<u>29.09.23</u>	-	<u>Procedural Decision 01</u>
-	-	-	-

Inserted Cells

Inserted Cells

Inserted Cells

Inserted Cells



This document is issued for the party which commissioned it and for specific purposes connected with the above-captioned project only. It should not be relied upon by any other party or used for any other purpose.

We accept no responsibility for the consequences of this document being relied upon by any other party, or being used for any other purpose, or containing any error or omission which is due to an error or omission in data supplied to us by other parties.

This document contains confidential information and proprietary intellectual property. It should not be shown to other parties without consent from us and from the party which commissioned it

~~(love, every, drop anglianwater)~~

## Contents

<b>1</b>	<b>Historic Landscape Characterisation</b>	<b>1</b>
1.1	Overview figures	1
1.2	Table of Historic Landscape Character Areas (HLCAs)	1
1.3	Impact to Historic Landscape Character Areas	35

## Contents

<del>1</del>	<del>Historic Landscape Characterisation</del>	<del>1</del>
<del>1.1</del>	<del>Overview figures</del>	<del>1</del>
<del>1.2</del>	<del>Table of Historic Landscape Character Areas (HLCAs)</del>	<del>1</del>
<del>1.3</del>	<del>Impact to Historic Landscape Character Areas</del>	<del>35</del>

## Tables

Table 1-1: Historic Landscape Character Areas (HLCAs) within the 1km study area	1
Table 1-2: Impact to HLCAs within the 1km study area	35

## Figures

Figure 1.1: Historic Landscape Character Areas (HLCAs) within the 1km study area	1
Figure 1.2: HLCAs within the 1km study area by broad type	22



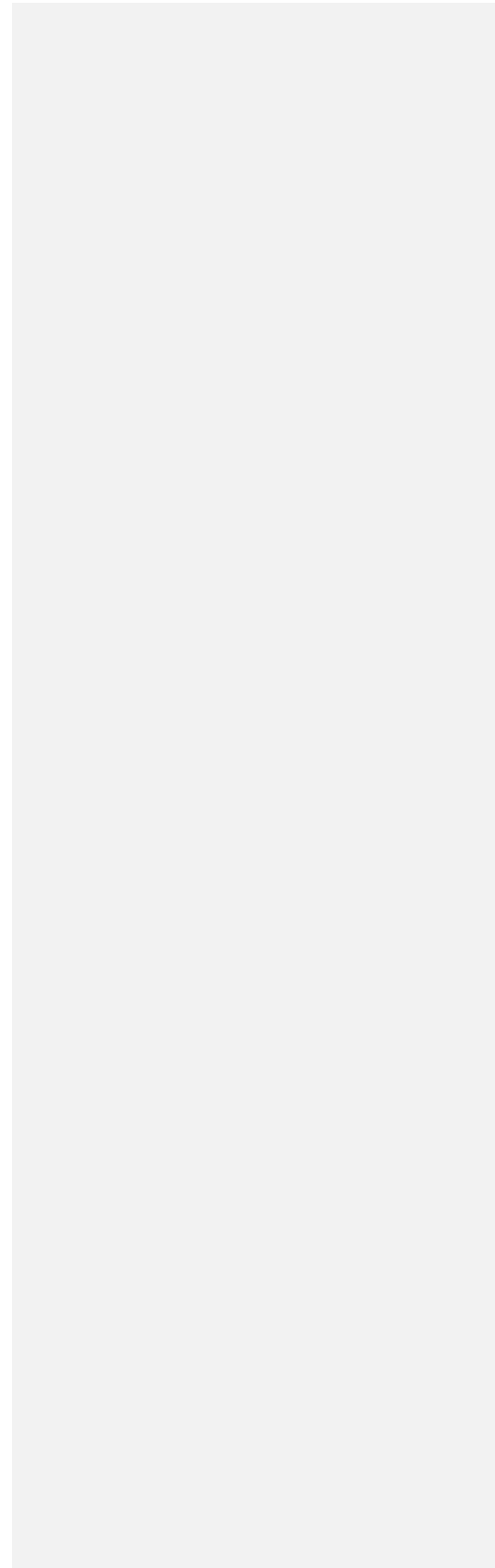
~~love every drop~~  
~~anglianwater~~



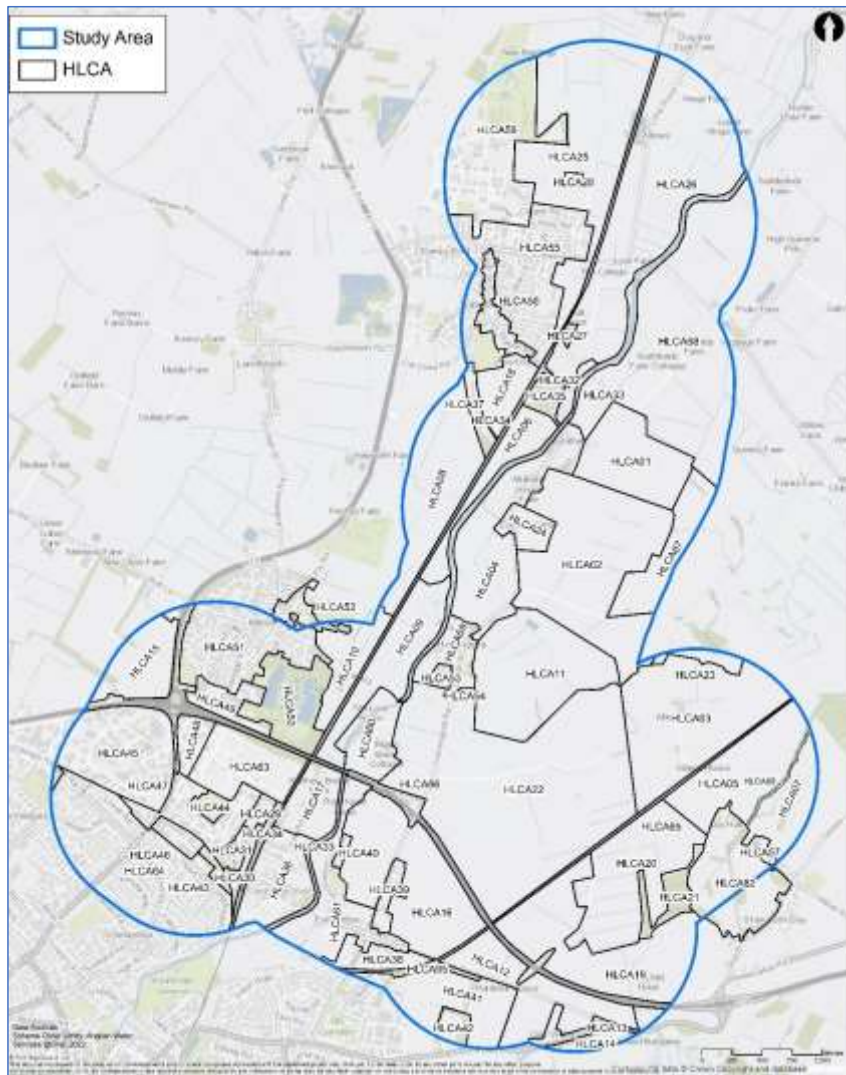
**3** ————— **1** Historic Landscape  
Characterisation

**3.1**

**Overview figures**



## 1.1 Overview figures



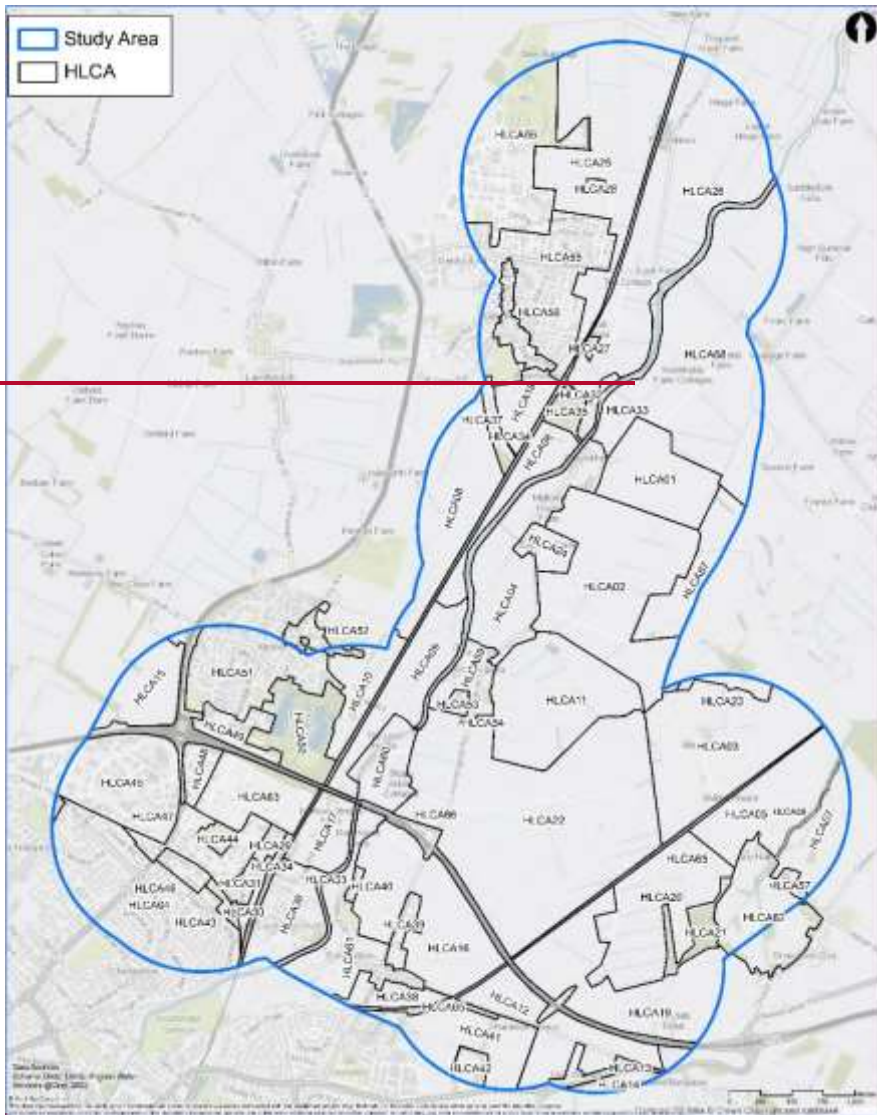
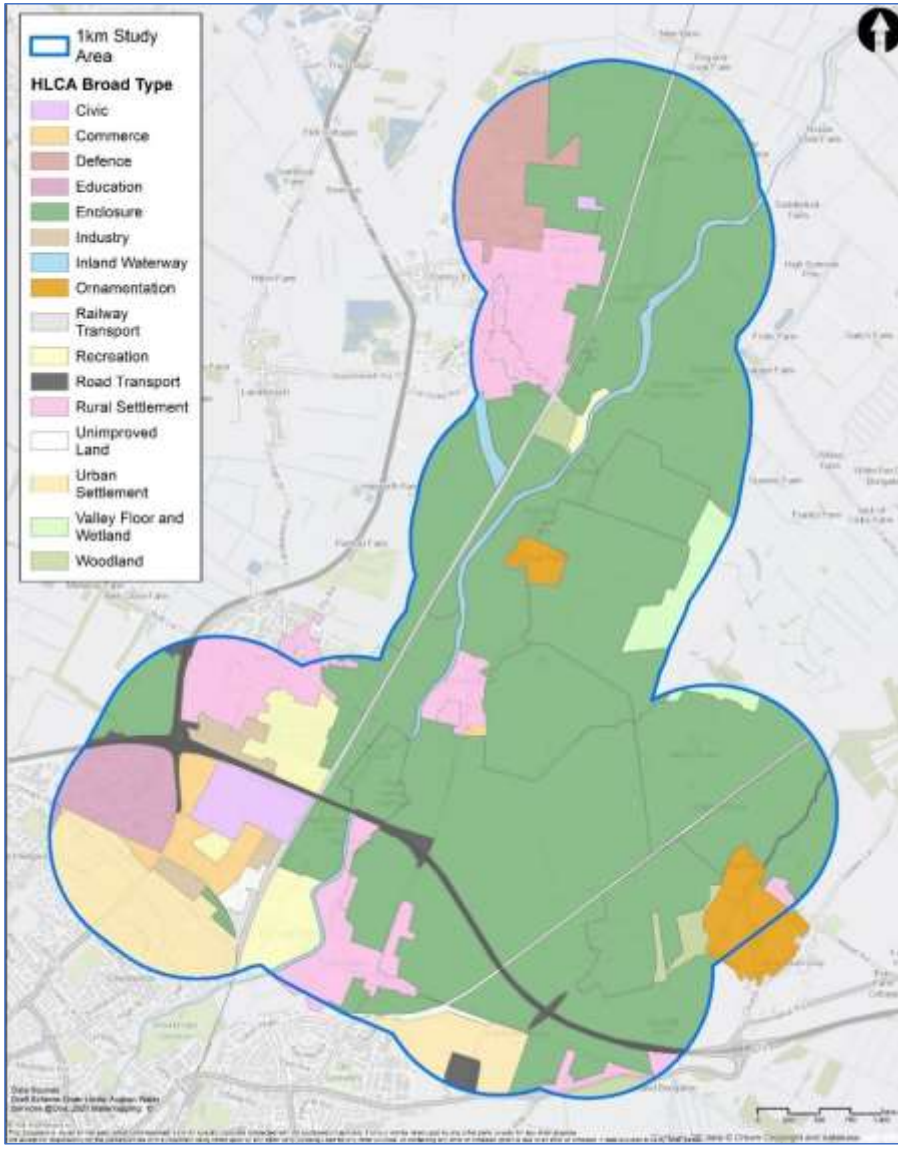


Figure 1.1: Historic Landscape Character Areas (HLCAs) within the 1km study area

±



Cambridge Waste Water Treatment  
Relocation Project Historic Landscape  
Characterisation







anglian water

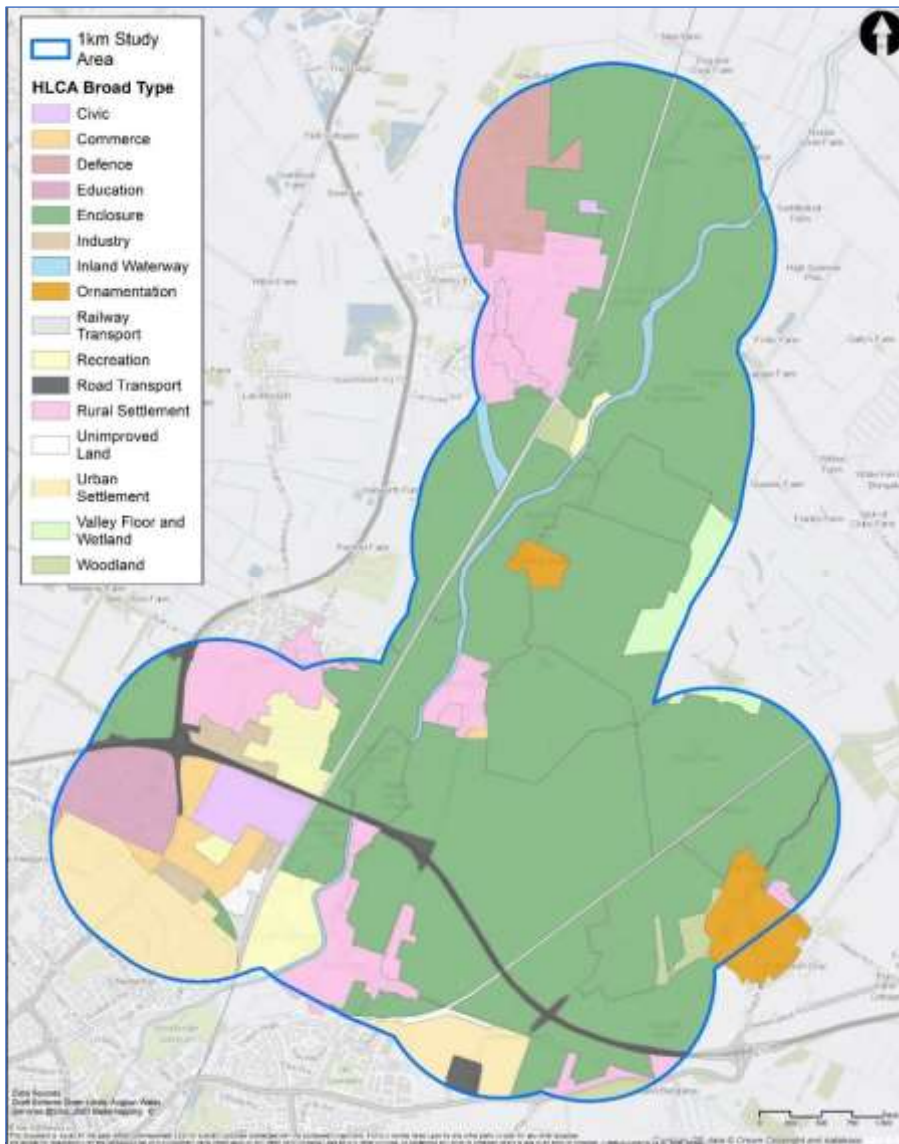
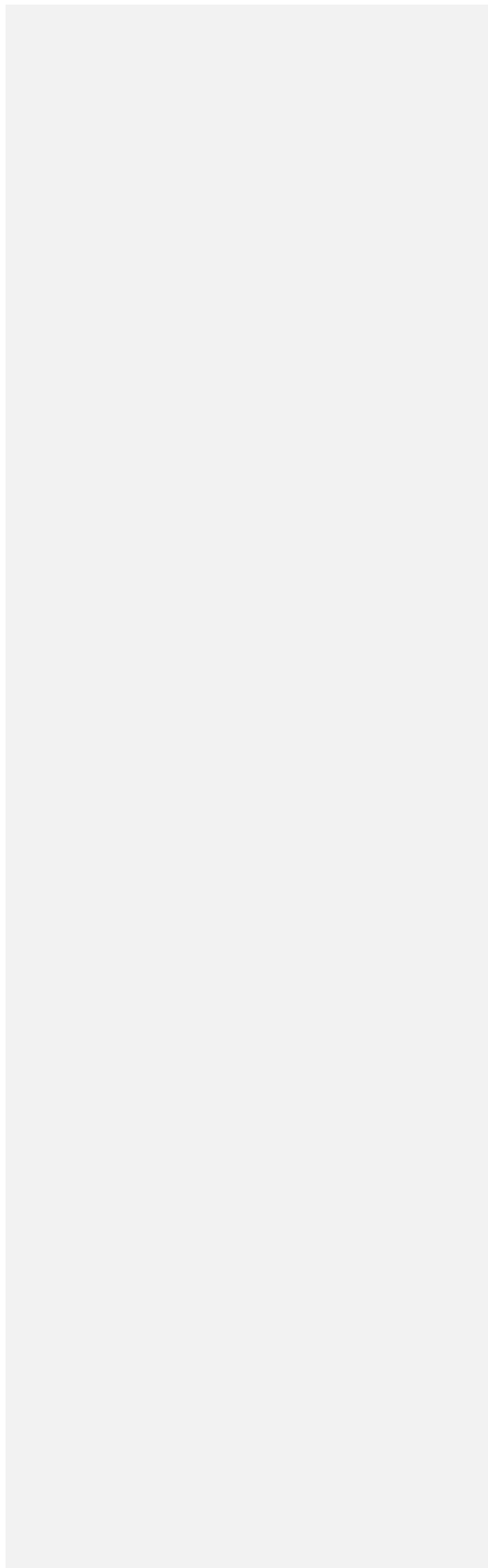


Figure 1.2: HLCAs within the 1km study area by broad type



### 3.2 1.2 Table of Historic Landscape Character Areas (HLCAs)

1.2.1 The below table, Table 1-1, provides an overview of each HLCA identified within the 1km study area. The method for defining these areas is included in Section 2 of the Historic Environment Technical Appendix.

~~Table 1-1: Historic Landscape Character Areas (HLCAs) within the 1km study area.~~



<del>Area Map</del>	<del>Reference</del>	<del>Name</del>	<del>Broad type</del>	<del>Narrow type</del>	<del>Date</del>	<del>Source</del>	<del>Previous Type</del>	<del>Designation</del>	<del>Related</del>	<del>Value</del>
	<del>HLCA01</del>	<del>Northfields</del>	<del>Enclosure</del>	<del>Amalgamated Fields</del>	<del>1925</del>	<del>(Ordnance Survey, 1925)</del>	<del>Open field system/Reclamation from wetland</del>	<del>-</del>	<del>-</del>	<del>Low</del>

Table 1-1: Historic Landscape Character Areas (HLCAs) within the 1km study area.

<u>Area Map</u>	<u>Reference</u>	<u>Name</u>	<u>Broad type</u>	<u>Narrow type</u>	<u>Date</u>	<u>Source</u>	<u>Previous Type</u>	<u>Designation</u>	<u>Related</u>	<u>Value</u>
	<u>HLCA01</u>	<u>Northfields</u>	<u>Enclosure</u>	<u>Amalgamated Fields</u>	<u>1925</u>	<u>(Ordnance Survey, 1925)</u>	<u>Open field system/Reclamation from wetland</u>	<u>-</u>	<u>-</u>	<u>Low</u>

[Area Map](#)

<a href="#">Reference</a>	<a href="#">Name</a>	<a href="#">Broad type</a>	<a href="#">Narrow type</a>	<a href="#">Date</a>	<a href="#">Source</a>	<a href="#">Previous Type</a>	<a href="#">Designation</a>	<a href="#">Related References</a>	<a href="#">Value</a>
---------------------------	----------------------	----------------------------	-----------------------------	----------------------	------------------------	-------------------------------	-----------------------------	------------------------------------	-----------------------



Clayhithe East	Enclosure	Planned Field System	1810	(Smith, <a href="#">Plan of the parish of Horningsea, made on the enclosure, 1810</a> ( <a href="#">Maps.Ms.Plans.35</a> ), 1810)	Extractive pit/Reclamation from Wetland/Open field system	Clayhithe East	Enclosure	Planned Field System	Low
----------------	-----------	----------------------	------	---	---	----------------	-----------	----------------------	-----

Deleted Cells

HLCA02



Reference	Name	Broad type	Narrow type	Date	Source	Previous Designation
		Enclosure		1886		



Cambridge Waste Water Treatment Relocation Project  
Historic Landscape Characterisation



[Area Map](#)

Reference	Name	Broad type	Narrow type	Date	Source	Previous Type	Designation	Related References	Value
		Enclosure		1886	(Ordnance Survey, 1886)		none	None	Low



HLCA03-	Lower Farm -Fields	Amalgamated	1886-	(Ordnance Survey, 1886)	on from	Wetland	Reclamati
---------	--------------------	-------------	-------	-------------------------	---------	---------	-----------



North Horningsea	Enclosure	Amalgamated Fields	1886	(Ordnance Survey, 1886)	Meadow/ Open field system	Scheduled Monument	HE002	High
------------------	-----------	--------------------	------	-------------------------	---------------------------	--------------------	-------	------

Deleted Cells

HLCA04

Wetland

love every drop  
anglianwater

[Area Map](#)

[Reference](#)

[Name](#)

[Broad type](#)

[Narrow type](#)

[Date](#)

[Source](#)

[Previous Type](#)

[Designation](#)

[Related References](#)

[Value](#)

[Enclosure](#)

none

None

Low

**[References](#)**

None

Low

~~Reference Name Broad type Narrow type Date Source Previous Designation Type~~



[Cambridge Waste Water Treatment Relocation Project](#)  
[Historic Landscape Characterisation](#)



<a href="#">Area Map</a>	<a href="#">Reference</a>	<a href="#">Name</a>	<a href="#">Broad type</a>	<a href="#">Narrow type</a>	<a href="#">Date</a>	<a href="#">Source</a>	<a href="#">Previous Type</a>	<a href="#">Designation</a>	<a href="#">Related References</a>	<a href="#">Value</a>
			<a href="#">Enclosure</a>		<a href="#">1886</a>	<a href="#">(Ordnance Survey, 1886)</a>		<a href="#">none</a>	<a href="#">None</a>	<a href="#">Low</a>
			<del>Enclosure</del>		<del>1886</del>					

~~Cambridge Waste Water Treatment Relocation Project~~



~~Historic Landscape Characterisation-anglianwater~~



[Area Map](#)

<a href="#">Reference</a>	<a href="#">Name</a>	<a href="#">Broad type</a>	<a href="#">Narrow type</a>	<a href="#">Date</a>	<a href="#">Source</a>	<a href="#">Previous Type</a>	<a href="#">Designation</a>	<a href="#">Related References</a>	<a href="#">Value</a>
---------------------------	----------------------	----------------------------	-----------------------------	----------------------	------------------------	-------------------------------	-----------------------------	------------------------------------	-----------------------

**Area Map**



HLCA05	Hoe Fen	Enclosure	Amalgamated Fields		(Ordnance Survey, 1886)	Reclamation from Wetland	none	None	Low
--------	---------	-----------	--------------------	--	-------------------------	--------------------------	------	------	-----



HLCA06	Cow Hollow South	Enclosure	Reclamation from Wetland	1886	(Ordnance Survey, 1886)	Meadow	none	None	Low
--------	------------------	-----------	--------------------------	------	-------------------------	--------	------	------	-----



Cambridge Waste Water Treatment Relocation Project  
Historic Landscape Characterisation

[Area Map](#)

Reference	Name	Broad type	Narrow type	Date	Source	Previous Type	Designation
-----------	------	------------	-------------	------	--------	---------------	-------------

Reference	Name	Broad type	Narrow type	Date	Source	Previous Type	Designation	Related References	Value
		Enclosure		1886	(Ordnance Survey, 1886)		none	None	Low
		Enclosure		1886					

3

love every drop

**References**

HLCA075	<a href="#">Hoe Fen</a>	<a href="#">Amalgamated</a>	<a href="#">Quay Water North Fields</a>	1840	Reclamation from Wetland (Smith, 1840)	Wetland	Enclosure
---------	-------------------------	-----------------------------	---	------	--	---------	-----------

- Deleted Cells
- Deleted Cells
- Deleted Cells
- Inserted Cells

[Area Map](#)

[Reference](#)

[Name](#)

[Broad type](#)

[Narrow type](#)

[Date](#)

[Source](#)

[Previous Type](#)

[Designation](#)

[Related References](#)

[Value](#)

[Enclosure](#)

[none](#)

[None](#)

[Low](#)



~~None~~ ~~Low~~



[Ely Road EastCow Hollow South](#)

Enclosure

[Planned enclosure Reclamation from Wetland](#)

1886

(Ordnance Survey, 1886)

[Open Field System Meadow](#)

none

None

Deleted Cells

HLCA086



[Cambridge Waste Water Treatment Relocation Project](#)  
[Historic Landscape Characterisation](#)

~~Reference Name Broad type Narrow type Date Source Previous Designation Type~~

[Area Map](#)

<a href="#">Reference</a>	<a href="#">Name</a>	<a href="#">Broad type</a>	<a href="#">Narrow type</a>	<a href="#">Date</a>	<a href="#">Source</a>	<a href="#">Previous Type</a>	<a href="#">Designation</a>	<a href="#">Related References</a>	<a href="#">Value</a>
		<a href="#">Enclosure</a>		<a href="#">1886</a>	<a href="#">(Ordnance Survey, 1886)</a>		<a href="#">none</a>	<a href="#">None</a>	<a href="#">Low</a>
		<del>Enclosure</del>		<del>1886</del>					







Reference	Name	Broad-type	Narrow-type	Date	Source	Previous Type	Designation	Related	Value
		Enclosure		1886	(Ordnance Survey,		none		

[Cambridge Waste Water Treatment Relocation Project  
Historic Landscape Characterisation](#)



**Area-Map**



Reference	Name	Broad-type	Narrow-type	Date	Source	Previous Type	Designation	Related	Value
HLCA09	Baits-Bite North	Meadow	HLCA07	1840	Quay Water Reclamation (Smith, 1840)	None	Wetland/	References	
			None		North		from Wetland		Low
							Enclosure		



Milton Ely Road East	Enclosure	Planned Enclosure	1886	(Ordnance Survey, 1886)	Settlement	Open Field System	none	None	Schedule
----------------------	-----------	-------------------	------	-------------------------	------------	-------------------	------	------	----------

- Deleted Cells
- Deleted Cells
- Inserted Cells
- Inserted Cells

HLCA108

1886)



**Planned Enclosure**

Reference	Name	Broad type	Narrow type	Date	Source	Previous Type	Designation
				1886	{Ordnance Survey,		none



[Area Map](#)

**Reference** **Name** **Broad-type** **Narrow-type** **Date** **Source** **Previous Type** **Designation** **Related References** **Value**

[Enclosure](#) (Ordnance Survey, [none](#) [None](#) [Low](#)

ever8 drop

[References](#)



[HLCA09](#)

[Baits Bite North](#)

[Planned Enclosure](#)

[Meadow](#)

Inserted Cells  
 Inserted Cells





[Area Map](#)

<a href="#">Reference</a>	<a href="#">Name</a>	<a href="#">Broad type</a>	<a href="#">Narrow type</a>	<a href="#">Date</a>	<a href="#">Source</a>	<a href="#">Previous Type</a>	<a href="#">Designation</a>	<a href="#">Related References</a>	<a href="#">Value</a>
		<a href="#">Enclosure</a>		<a href="#">1886</a>	<a href="#">(Ordnance Survey, 1886)</a>		<a href="#">none</a>	<a href="#">None</a>	<a href="#">Low</a>



[Milton East](#)  
[Horningsea](#)

<a href="#">Enclosure</a>	<a href="#">Amalgamated Fields</a>	<a href="#">1901-1886</a>	<a href="#">(Ordnance Survey, 1901-1886)</a>	<a href="#">Settlement</a>	<a href="#">non</a>	<a href="#">Scheduled Monument</a>	<a href="#">High</a>
	<a href="#">Planned Enclosure</a>			<a href="#">Open field system</a>			
				<a href="#">tractive</a>			
				<a href="#">pitt</a>			

- Inserted Cells
- Inserted Cells
- Inserted Cells
- Inserted Cells

HLCA140

[Area Map](#)

**Reference** **Name** **Broad-type** **Narrow-type** **Date** **Source** **Previous Type** **Designation** **Related References** **Value**

Enclosure (Ordnance Survey, none None Low



HLCA11 East Amalgamated 1901 (Ordnance Survey, Open

field None

Horningsea Fields 1901 system/ex

tractive pit

[Area Map](#)

<a href="#">Reference</a>	<a href="#">Name</a>	<a href="#">Broad type</a>	<a href="#">Narrow type</a>	<a href="#">Date</a>	<a href="#">Source</a>	<a href="#">Previous Type</a>	<a href="#">Designation</a>	<a href="#">Related References</a>	<a href="#">Value</a>
		<a href="#">Enclosure</a>		<a href="#">1886</a>	<a href="#">(Ordnance Survey, 1886)</a>		<a href="#">none</a>	<a href="#">None</a>	<a href="#">Low</a>
	<a href="#">High Ditch</a>	<a href="#">Enclosure</a>	<a href="#">Amalgamated Fields</a>	<a href="#">1925</a>	<a href="#">(Ordnance Survey, 1927)</a>	<a href="#">Piecemeal Enclosure</a>	<a href="#">none</a>	<a href="#">None</a>	<a href="#">Low</a>



[HLCA12](#)

Area-Map	Reference	Name	Broad-type	Narrow-type	Date	Source	Previous Type	Designation	Related References	Value
			Enclosure			{Ordnance Survey,		none	None	Low
	HLCA13	Farm Settlement		Greenhouse	Low	Rural	Isolated Farm	Unknown		



High  
Ditch  
Water  
South

Enclosure Amalgamated Plantation 1925 1999 (Ordnance Survey, Google Earth, 1999 1927)  
Fields Woodland  
Open Field  
Piecemeal Enclosure System  
none None  
Low Negligible

- Deleted Cells
- Deleted Cells
- Inserted Cells
- Inserted Cells

HLCA124

[Area Map](#)

<a href="#">Reference</a>	<a href="#">Name</a>	<a href="#">Broad type</a>	<a href="#">Narrow type</a>	<a href="#">Date</a>	<a href="#">Source</a>	<a href="#">Previous Type</a>	<a href="#">Designation</a>	<a href="#">Related References</a>	<a href="#">Value</a>
				1886	(Ordnance Survey,		none	None	Low



Historic Landscape Characterisation Cambridge Waste Water Treatment Relocation Project

but euera atop **9** anglianwater



Area-Map

Reference Name Broad-type Narrow-type Date Source Previous Type Designation Related References Value

Enclosure (Ordnance Survey, none None Low

Area Map



HLCA13 Greenhouse Farm Rural Settlement Isolated Farm 1886

(Ordnance Survey, 1886)

Unknown none None Low



HLCA14 Quy Water South Woodland Plantation 1999

(Google Earth, 1999)

Open Field System none None Negligible

<a href="#">Area-Map</a>	<a href="#">Reference</a>	<a href="#">Name</a>	<a href="#">Broad-type</a>	<a href="#">Narrow-type</a>	<a href="#">Date</a>	<a href="#">Source</a>	<a href="#">Previous Type</a>	<a href="#">Designation</a>	<a href="#">Related References</a>	<a href="#">Value</a>
					<a href="#">1886</a>	<a href="#">(Ordnance Survey, 1886)</a>		<a href="#">none</a>	<a href="#">None</a>	<a href="#">Low</a>

love every drop

[References](#)



HLCA15-  
Public Drain

Thirteenth  
Unimproved Land

Scrub 1999- (Google Earth, 1999) Landfill — None — Low



Fen Enclosure Amalgamated Fields 1886 (Ordnance Survey, 1886) Planned Fields none None Low

HLCA16

Deleted Cells



[Area Map](#)

<a href="#">Reference</a>	<a href="#">Name</a>	<a href="#">Broad type</a>	<a href="#">Narrow type</a>	<a href="#">Date</a>	<a href="#">Source</a>	<a href="#">Previous Type</a>	<a href="#">Designation</a>	<a href="#">Related References</a>	<a href="#">Value</a>	
							none	None	Low	
<a href="#">HLCA17</a>	<a href="#">North Bridge</a>	<a href="#">Enclosure</a>	<a href="#">Amalgamated Fields</a>	<a href="#">1966</a>						
				<a href="#">1966</a>						
	<a href="#">Waterbeach Abbey</a>	<a href="#">Enclosure</a>		<a href="#">1886</a>	<a href="#">(Ordnance Survey, (-1886) Wetland</a>		<a href="#">Place of Worship / Planned Fields / Meadow</a>	<a href="#">scheduled monument</a>	<a href="#">HE004</a>	<a href="#">High</a>
<a href="#">HLCA18</a>										



[Area Map](#)

<a href="#">Reference</a>	<a href="#">Name</a>	<a href="#">Broad type</a>	<a href="#">Narrow type</a>	<a href="#">Date</a>	<a href="#">Source</a>	<a href="#">Previous Type</a>	<a href="#">Designation</a>	<a href="#">Related References</a>	<a href="#">Value</a>
---------------------------	----------------------	----------------------------	-----------------------------	----------------------	------------------------	-------------------------------	-----------------------------	------------------------------------	-----------------------



<a href="#">HLCA19</a>	<a href="#">Stow cum</a>	<a href="#">Enclosure</a>	<a href="#">Amalgamated</a>	<a href="#">1999</a>	<a href="#">(Ordnance Survey, Google Earth, 1999)</a>	<a href="#">Planned</a>	<a href="#">none</a>	<a href="#">None</a>	<a href="#">Low</a>
	<a href="#">Quy West</a>		<a href="#">Wetland / Planned Fields</a>			<a href="#">Fields</a>	<a href="#">Fields</a>		



[HLCA20](#)

<a href="#">Honey Hill South</a>	<a href="#">Enclosure</a>	<a href="#">Planned Field System</a>	<a href="#">-1886</a>	<a href="#">(Ordnance Survey, -1886)</a>	<a href="#">Wetland / Planned Fields</a>	<a href="#">none</a>	<a href="#">None</a>	<a href="#">Low</a>
----------------------------------	---------------------------	--------------------------------------	-----------------------	--	--	----------------------	----------------------	---------------------

[Area Map](#)

<a href="#">Reference</a>	<a href="#">Name</a>	<a href="#">Broad type</a>	<a href="#">Narrow type</a>	<a href="#">Date</a>	<a href="#">Source</a>	<a href="#">Previous Type</a>	<a href="#">Designation</a>	<a href="#">Related References</a>	<a href="#">Value</a>
							none	None	Low
<a href="#">Historic Landscape Characterisation</a>	<a href="#">HLCA21</a>	<a href="#">West Quay</a>	<a href="#">Woodland</a>	<a href="#">Plantation</a>	<a href="#">anglian</a>	<a href="#">1901</a>	<a href="#">Planned 1903</a>	<a href="#">Fields</a>	



[Area Map](#)

Reference	Name	Broad type	Narrow type	Date	Source	Previous Type	Designation	Related References	Value
-----------	------	------------	-------------	------	--------	---------------	-------------	--------------------	-------

**Area Map**



HLCA17	North Bridge	Enclosure	Amalgamated Fields	1966	(Ordnance Survey, 1966)	Meadow / Planned Fields	none	None	Low
--------	--------------	-----------	--------------------	------	-------------------------	-------------------------	------	------	-----



HLCA18	Waterbeach Abbey	Enclosure	Reclaimed from Wetland	1886	(Ordnance Survey, 1886)	Place of Worship / Planned Fields / Meadow	scheduled monument	HE004	High
--------	------------------	-----------	------------------------	------	-------------------------	--	--------------------	-------	------

[Area Map](#)

<a href="#">Reference</a>	<a href="#">Name</a>	<a href="#">Broad type</a>	<a href="#">Narrow type</a>	<a href="#">Date</a>	<a href="#">Source</a>	<a href="#">Previous Type</a>	<a href="#">Designation</a>	<a href="#">Related References</a>	<a href="#">Value</a>
---------------------------	----------------------	----------------------------	-----------------------------	----------------------	------------------------	-------------------------------	-----------------------------	------------------------------------	-----------------------



<a href="#">Honey Hill North</a>	<a href="#">Enclosure</a>	<a href="#">Planned Enclosure</a>	<a href="#">1810</a>	<a href="#">(Smith, 1810)</a>	<a href="#">Open Field System / Planned Field</a>	<a href="#">none</a>	<a href="#">None</a>	<a href="#">None</a>	<a href="#">Low</a>
----------------------------------	---------------------------	-----------------------------------	----------------------	-------------------------------	---	----------------------	----------------------	----------------------	---------------------

[HLCA22](#)



<a href="#">HLCA23</a>	<a href="#">Stow cum</a>	<a href="#">Valley</a>	<a href="#">Wetland</a>	<a href="#">1840</a>	<a href="#">(Smith, 1840)</a>	<a href="#">Wetland</a>			
------------------------	--------------------------	------------------------	-------------------------	----------------------	-------------------------------	-------------------------	--	--	--

Historic Landscape Characterisation Cambridge Waste Water Treatment Relocation Project [Quy Fen](#)

~~but ever8 drop~~ **9** ~~anglianwater~~ [Floor and](#)



[Area Map](#)

<a href="#">Reference</a>	<a href="#">Name</a>	<a href="#">Broad type</a>	<a href="#">Narrow type</a>	<a href="#">Date</a>	<a href="#">Source</a>	<a href="#">Previous Type</a>	<a href="#">Designation</a>	<a href="#">Related References</a>	<a href="#">Value</a>
					(Ordnance Survey,		none	None	Low

**Area Map**



HLCA19	Stow-cum-Quy West	Enclosure	Amalgamated Fields	1999	(Google Earth, 1999)	Planned Fields		None	Low
--------	-------------------	-----------	--------------------	------	----------------------	----------------	--	------	-----



HLCA20	Honey Hill South	Enclosure	Planned Field System	1886	(Ordnance Survey, 1886)	Wetland / Planned Fields	none	None	Low
--------	------------------	-----------	----------------------	------	-------------------------	--------------------------	------	------	-----



[Area Map](#)

<a href="#">Reference</a>	<a href="#">Name</a>	<a href="#">Broad type</a>	<a href="#">Narrow type</a>	<a href="#">Date</a>	<a href="#">Source</a>	<a href="#">Previous Type</a>	<a href="#">Designation</a>	<a href="#">Related References</a>	<a href="#">Value</a>
				1886	( <a href="#">Ordnance Survey, 1886</a> )		none	None	Low



[Area Map](#)



<a href="#">Reference</a>	<a href="#">Name</a>	<a href="#">Broad type</a>	<a href="#">Narrow type</a>	<a href="#">Date</a>	<a href="#">Source</a>	<a href="#">Previous Type</a>	<a href="#">Designation</a>	<a href="#">Related References</a>	<a href="#">Value</a>
HLCA21	West Quay	Woodland	Plantation	1901	( <a href="#">Ordnance Survey, 1903</a> )	Planned Fields	none	None	Low



HLCA22	Honey Hill North	Enclosure	Planned Enclosure	1810	( <a href="#">Smith, 1810</a> )	Open Field System / Planned Field	none	None	Low
--------	------------------	-----------	-------------------	------	---------------------------------	-----------------------------------	------	------	-----





[Area Map](#)

<a href="#">Reference</a>	<a href="#">Name</a>	<a href="#">Broad type</a>	<a href="#">Narrow type</a>	<a href="#">Date</a>	<a href="#">Source</a>	<a href="#">Previous Type</a>	<a href="#">Designation</a>	<a href="#">Related References</a>	<a href="#">Value</a>
					<a href="#">(Ordnance Survey,</a>		<del>none</del>	<a href="#">None</a>	<a href="#">Low</a>



[Area Map](#)



<a href="#">Reference</a>	<a href="#">Name</a>	<a href="#">Broad type</a>	<a href="#">Narrow type</a>	<a href="#">Date</a>	<a href="#">Source</a>	<a href="#">Previous Type</a>	<a href="#">Designation</a>	<a href="#">Related References</a>	<a href="#">Value</a>
HLCA23	Stow cum Quy Fen South	Valley Floor and Wetland	Wetland	1840	(Smith, 1840)	Wetland	none	None	Low



HLCA24	Eye Hall Park and Garden	Ornamenta tion	Formal Garden	16th c, 19th c	(Smith, 1810)	Unknown	none	None	Moderat e
--------	-----------------------------	-------------------	------------------	-------------------	---------------	---------	------	------	--------------



<a href="#">Area Map</a>	<a href="#">Reference</a>	<a href="#">Name</a>	<a href="#">Broad type</a>	<a href="#">Narrow type</a>	<a href="#">Date</a>	<a href="#">Source</a>	<a href="#">Previous Type</a>	<a href="#">Designation</a>	<a href="#">Related References</a>	<a href="#">Value</a>
		South	Wetland					none	None	Low



[Area Map](#)

<a href="#">Reference</a>	<a href="#">Name</a>	<a href="#">Broad type</a>	<a href="#">Narrow type</a>	<a href="#">Date</a>	<a href="#">Source</a>	<a href="#">Previous Type</a>	<a href="#">Designation</a>	<a href="#">Related References</a>	<a href="#">Value</a>
---------------------------	----------------------	----------------------------	-----------------------------	----------------------	------------------------	-------------------------------	-----------------------------	------------------------------------	-----------------------



					(Ordnance Survey,		none	None	Low
	<a href="#">Eye Hall Park and Garden</a>	<a href="#">Ornamentation</a>	<a href="#">Formal Garden</a>	<a href="#">16th c, 19th c</a>	<a href="#">(Smith, 1810)</a>	<a href="#">Unknown</a>	none	None	Moderate

HLCA24



[Area Map](#)

<a href="#">Reference</a>	<a href="#">Name</a>	<a href="#">Broad type</a>	<a href="#">Narrow type</a>	<a href="#">Date</a>	<a href="#">Source</a>	<a href="#">Previous Type</a>	<a href="#">Designation</a>	<a href="#">Related References</a>	<a href="#">Value</a>
<a href="#">none</a>	<a href="#">None</a>	<a href="#">Low</a>							



HLCA25-	North	Enclosure	Amalgamated	1999-	(Google Earth, 1999)	Open			
---------	-------	-----------	-------------	-------	----------------------	------	--	--	--



<a href="#">Area Map</a>	<a href="#">Reference</a>	<a href="#">Name</a>	<a href="#">Broad type</a>	<a href="#">Narrow type</a>	<a href="#">Date</a>	<a href="#">Source</a>	<a href="#">Previous Type</a>	<a href="#">Designation</a>	<a href="#">Related References</a>	<a href="#">Value</a>
		Waterbeach		Fields			Field	none	<a href="#">None</a>	



<a href="#">Area Map</a>	<a href="#">Reference</a>	<a href="#">Name</a>	<a href="#">Broad type</a>	<a href="#">Narrow type</a>	<a href="#">Date</a>	<a href="#">Source</a>	<a href="#">Previous Type</a>	<a href="#">Designation</a>	<a href="#">Related References</a>	<a href="#">Value</a>
		System / Reclaimed from Wetland						<a href="#">none</a>	<a href="#">None</a>	<a href="#">Low</a>



[Area Map](#)

<a href="#">Reference</a>	<a href="#">Name</a>	<a href="#">Broad-type</a>	<a href="#">Narrow-type</a>	<a href="#">Date</a>	<a href="#">Source</a>	<a href="#">Previous Type</a>	<a href="#">Designation</a>	<a href="#">Related References</a>	<a href="#">Value</a>
							none	None	



Drove

HLCA26

[Area Map](#)

[Reference](#)   [Name](#)   [Broad type](#)   [Narrow type](#)   [Date](#)   [Source](#)   [Previous Type](#)   [Designation](#)   [Related References](#)   [Value](#)



[none](#)   [None](#)   [Low](#)

~~love every drop~~  
~~anglianwater~~  
**Related References**  
~~None~~   ~~Low~~







[Area Map](#)

[Reference](#)

[Name](#)

[Broad-type](#)

[Narrow-type](#)

[Date](#)

[Source](#)

[Previous Type](#)

[Designation](#)

[Related References](#)

[Value](#)

[none](#)

[None](#)

[Low](#)



~~Wetland~~ [HLCA29](#) [Tarmac](#) [Industry](#) [Industrial](#) [2003 \(Google Earth, 2003\)](#)  
[Railway](#) [Negligibl](#)

~~love every drop anglianwater~~

~~None~~ [Cambridge](#)

~~Low~~

[Related References](#)

<a href="#">Area-Map</a>	<a href="#">Reference</a>	<a href="#">Name</a>	<a href="#">Broad-type</a>	<a href="#">Narrow-type</a>	<a href="#">Date</a>	<a href="#">Source</a>	<a href="#">Previous Type</a>	<a href="#">Designation</a>	<a href="#">Related References</a>	<a href="#">Value</a>
								none	None	
<a href="#">Estate</a>			<a href="#">Transport</a>							
			<a href="#">Asphalt</a>						<a href="#">love every drop anglia water</a> Related	
				<a href="#">Site</a>						

**References**

HLCA29	Tarmac Cambridge Asphalt	Industry	Industrial Estate	2003	(Google Earth, 2003)	Railway Transport Site	None	Negligible
--------	--------------------------	----------	-------------------	------	----------------------	------------------------	------	------------



Deleted Cells  
 Deleted Cells

[Area Map](#)

[Reference](#) [Name](#) [Broad-type](#) [Narrow-type](#) [Date](#) [Source](#) [Previous Type](#) [Designation](#) [Related References](#) [Value](#)

none None Low



HLCA30

Cambridge North Station	Railway Transport	Railway Station	2017	-(Google Earth, 2017)	Railyard	none	None	Negligible
-------------------------	-------------------	-----------------	------	-----------------------	----------	------	------	------------

Deleted Cells



[Area Map](#)

[Reference](#) [Name](#) [Broad-type](#) [Narrow-type](#) [Date](#) [Source](#) [Previous Type](#) [Designation](#) [Related References](#) [Value](#)



HLCA31- Milton Lane  
 d Land Rough Ground Unimprove  
 \_\_\_\_\_ fields Secondary  
 2017- (Google Earth, 2017) Planned

[none](#) [None](#)



**HLCA32** ~~Cam Sailing Club~~ ~~Recreation~~ ~~Sailing Area~~ ~~1925~~ ~~(Ordnance Survey, 1925)~~ ~~Meadow~~ ~~none~~ ~~None~~ ~~Low~~





<a href="#">Area Map</a>	<a href="#">Reference</a>	<a href="#">Name</a>	<a href="#">Broad type</a>	<a href="#">Narrow type</a>	<a href="#">Date</a>	<a href="#">Source</a>	<a href="#">Previous Type</a>	<a href="#">Designation</a>	<a href="#">Related References</a>	<a href="#">Value</a>
								none	None	
	None									Low

W  
a  
t  
e  
r  
  
R  
e  
l  
a  
t  
e  
d  
R  
e  
f  
e  
r  
e  
n  
c  
e  
s



[Area Map](#)

[Reference](#)   [Name](#)   [Broad type](#)   [Narrow type](#)   [Date](#)   [Source](#)   [Previous Type](#)   [Designation](#)   [Related References](#)   [Value](#)

[none](#)   [None](#)

**Related**



[Cam Sailing Club](#)   [Recreation](#)   [Sailing Area](#)   [1925](#)   [\(Ordnance Survey, 1925\)](#)   [Meadow](#)   [none](#)   [None](#)   [Low](#)

[HLCA32](#)

[HLCA33](#)   [River Cam](#)   [Inland Waterway](#)   [Navigable River](#)   [1662](#)   [\(Blaeu, 1662\)](#)   [Unknown](#)   [None Moderate](#)



[Area Map](#)

<a href="#">Reference</a>	<a href="#">Name</a>	<a href="#">Broad type</a>	<a href="#">Narrow type</a>	<a href="#">Date</a>	<a href="#">Source</a>	<a href="#">Previous Type</a>	<a href="#">Designation</a>	<a href="#">Related References</a>	<a href="#">Value</a>
							<a href="#">none</a>	<a href="#">None</a>	<a href="#">Low</a>



[References](#)

[Area Map](#)



Reference	Name	Broad type	Narrow type	Date	Source	Previous Type	Designation	Related References	Value
<del>HLCA33</del>	<del>River Cam</del>	<del>Inland Waterway</del>	<del>Navigable River</del>	<del>1662</del>	<del>(Blaeu, 1662)</del>	<del>Unknown</del>	<del>none</del>	<del>None</del>	<del>Moderate</del>

Deleted Cells  
 Deleted Cells

[Area Map](#)

Reference	Name	Broad type	Narrow type	Date	Source	Previous Type	Designation	Related References	Value			
							none	None	Low			
						Fen Line Railway	Railway Transport	Railway	1886	(Ordnance Survey, 1886)	Unknown	none



HLCA34



[Area Map](#)

**Reference**   **Name**   **Broad type**   **Narrow type**   **Date**   **Source**   **Previous Type**   **Designation**   **Related References**   **Value**



HLCA35-  
2003) Meadow

Cow Hollow

Woodland

Plantation

**Related References**  
2003- (Google Earth,

~~None~~Wood   ~~Low~~

~~none~~   ~~None~~   ~~Low~~

Wood





**Area Map**

R  
e  
f  
e  
r  
e  
n  
c  
e  
  
N  
a  
m



d Watercourse Roman

-

Unknown

scheduled

HE003

[Area Map](#)

<a href="#">Reference</a>	<a href="#">Name</a>	<a href="#">Broad type</a>	<a href="#">Narrow type</a>	<a href="#">Date</a>	<a href="#">Source</a>	<a href="#">Previous Type</a>	<a href="#">Designation</a>	<a href="#">Related References</a>	<a href="#">Value</a>
	High	Waterway-					none monument	None	Negligible

[Area Map](#)

<a href="#">Reference</a>	<a href="#">Name</a>	<a href="#">Broad type</a>	<a href="#">Narrow type</a>	<a href="#">Date</a>	<a href="#">Source</a>	<a href="#">Previous Type</a>	<a href="#">Designation</a>	<a href="#">Related References</a>	<a href="#">Value</a>
							none	None	Negligible



Fen Ditton South	Enclosure	Planned Field System	1886	(Ordnance Survey, 1886)	Piecemeal Enclosure	none	None	Low
------------------	-----------	----------------------	------	-------------------------	---------------------	------	------	-----

HLCA38

Deleted Cells

[Area Map](#)

<a href="#">Reference</a>	<a href="#">Name</a>	<a href="#">Broad type</a>	<a href="#">Narrow type</a>	<a href="#">Date</a>	<a href="#">Source</a>	<a href="#">Previous Type</a>	<a href="#">Designation</a>	<a href="#">Related References</a>	<a href="#">Value</a>
							none	None	Negligible
<a href="#">HLCA39</a>	<a href="#">Musgrave</a>	Rural	Housing	1966	(Ordnance Survey, Allotment			<a href="#">Related</a>	
	<a href="#">Way</a>	Settlement	Estate	1966)	<a href="#">References</a>	s			





[Area Map](#)

<a href="#">Reference</a>	<a href="#">Name</a>	<a href="#">Broad type</a>	<a href="#">Narrow type</a>	<a href="#">Date</a>	<a href="#">Source</a>	<a href="#">Previous Type</a>	<a href="#">Designation</a>	<a href="#">Related References</a>	<a href="#">Value</a>
							none	None	Negligible



HLCA39	-Musgrave Way Rural Settlement	Rural Settlement	Housing Estate	1966	(Ordnance Survey, 1966)	Allotments	None		Negligible
--------	--------------------------------	------------------	----------------	------	-------------------------	------------	------	--	------------

Deleted Cells

Deleted Cells



[Area Map](#)

<a href="#">Reference</a>	<a href="#">Name</a>	<a href="#">Broad type</a>	<a href="#">Narrow type</a>	<a href="#">Date</a>	<a href="#">Source</a>	<a href="#">Previous Type</a>	<a href="#">Designation</a>	<a href="#">Related References</a>	<a href="#">Value</a>
							none	None	Negligible



HLCA41-  
 Earth, 2021-

Marshall  
 Amalgam

Urban      Suburb  
 North Settlement-      ated  
 Fields

[Area Map](#)

<a href="#">Reference</a>	<a href="#">Name</a>	<a href="#">Broad type</a>	<a href="#">Narrow type</a>	<a href="#">Date</a>	<a href="#">Source</a>	<a href="#">Previous Type</a>	<a href="#">Designation</a>	<a href="#">Related References</a>	<a href="#">Value</a>
							none	None	Negligible



Newmarket Road and Ride	Road Transport	Park and Ride	1999	-(Google Earth, 1999)	Amalgamated Fields	none	None	None	Negligible
-------------------------	----------------	---------------	------	-----------------------	--------------------	------	------	------	------------

HLCA42

Deleted Cells



<a href="#">Area-Map</a>	<a href="#">Reference</a>	<a href="#">Name</a>	<a href="#">Broad-type</a>	<a href="#">Narrow-type</a>	<a href="#">Date</a>	<a href="#">Source</a>	<a href="#">Previous Type</a>	<a href="#">Designation</a>	<a href="#">Related References</a>	<a href="#">Value</a>
							Planned	none	None	Negligible

anglianwater

[Related References](#)



HLCA43- Nuffield Enclosure Allotments 1999- (Google Earth, 1999)  
~~Road~~ ~~Fields~~  
 Allotments



[Driving Range](#) [Recreation](#) [Golf Course](#) 1999 (Google Earth, 1999) [Waterworks](#) none None Negligible

HLCA44

[Area Map](#)

<a href="#">Reference</a>	<a href="#">Name</a>	<a href="#">Broad-type</a>	<a href="#">Narrow-type</a>	<a href="#">Date</a>	<a href="#">Source</a>	<a href="#">Previous Type</a>	<a href="#">Designation</a>	<a href="#">Related References</a>	<a href="#">Value</a>
							none	None	Negligible



[HLCA44](#)

		<a href="#">Driving Range</a>	<a href="#">Recreation</a>	<a href="#">Golf Course</a>	<a href="#">1999</a>	<a href="#">(Google Earth, 1999)</a>	<a href="#">Waterworks</a>	none	None	Negligible
--	--	-------------------------------	----------------------------	-----------------------------	----------------------	--------------------------------------	----------------------------	------	------	------------



HLCA45-	Cambridge	Commerce	Business Park Science Park	1999-	(Google Earth, 1999)- Military Base
---------	-----------	----------	-------------------------------	-------	--



[Area-Map](#)

Reference	Name	Broad-type	Narrow-type	Date	Source	Previous Type	Designation	Related References	Value
						Planned Fields	none	None	Negligible

[Previous](#)



Trinity Farm Industrial Estate	Industry	Industrial Estate	1999	(Google Earth, 1999)	Isolated Farm	none	None	Negligible
--------------------------------	----------	-------------------	------	----------------------	---------------	------	------	------------

HLCA46

~~love every drop~~ **9** ~~anglianwater~~



HLCA47- Commercial	Cambridge	Commerce	Business Park	2002-	(Google Earth, 2002)	<del>None</del>	<del>None</del>	<del>Negligible</del>
--------------------	-----------	----------	---------------	-------	----------------------	-----------------	-----------------	-----------------------

Park

Deleted Cells

~~Related References~~

~~Value~~

[Area-Map](#)

<a href="#">Reference</a>	<a href="#">Name</a>	<a href="#">Broad-type</a>	<a href="#">Narrow-type</a>	<a href="#">Date</a>	<a href="#">Source</a>	<a href="#">Previous Type</a>	<a href="#">Designation</a>	<a href="#">Related References</a>	<a href="#">Value</a>
							none	None	Negligible



Innovation Park	Commerce	Business Park	2002	-(Google Earth, 2002)	Suburb	none	None	Negligible
-----------------	----------	---------------	------	-----------------------	--------	------	------	------------

HLCA48



Deleted Cells



[Area Map](#)

<a href="#">Reference</a>	<a href="#">Name</a>	<a href="#">Broad type</a>	<a href="#">Narrow type</a>	<a href="#">Date</a>	<a href="#">Source</a>	<a href="#">Previous Type</a>	<a href="#">Designation</a>	<a href="#">Related References</a>	<a href="#">Value</a>
---------------------------	----------------------	----------------------------	-----------------------------	----------------------	------------------------	-------------------------------	-----------------------------	------------------------------------	-----------------------

		Rural Settlement				Planned Fields	none	None	Negligible
	<a href="#">Previous</a>								
HLCA49-1966-Industrial Pit Estate	Milton (Ordnance Survey, 1966)	Industry	Extractive Estate			Industrial Negligible (1966)			



[Area Map](#)

<a href="#">Reference</a>	<a href="#">Name</a>	<a href="#">Broad-type</a>	<a href="#">Narrow-type</a>	<a href="#">Date</a>	<a href="#">Source</a>	<a href="#">Previous Type</a>	<a href="#">Designation</a>	<a href="#">Related References</a>	<a href="#">Value</a>
		Rural Settlement		1999			none	None	Negligible



Milton Country Park  
 Recreation Country Park  
 1999 (Google Earth, 1999)

Deleted Cells  
 Pit

HLCA50





<a href="#">Area Map</a>	<a href="#">Reference</a>	<a href="#">Name</a>	<a href="#">Broad type</a>	<a href="#">Narrow type</a>	<a href="#">Date</a>	<a href="#">Source</a>	<a href="#">Previous Type</a>	<a href="#">Designation</a>	<a href="#">Related References</a>	<a href="#">Value</a>
			Rural Settlement		1999	(Google Earth, 1999)		none	None	

#  
#  
a  
t  
e  
r

<a href="#">Related</a>	<a href="#">Value</a>
-------------------------	-----------------------



**References**

HLCA51  
 South Milton Suburb  
 1966  
 (Ordnance Survey,  
~~None~~  
 Low

<a href="#">Area Map</a>	<a href="#">Reference</a>	<a href="#">Name</a>	<a href="#">Broad type</a>	<a href="#">Narrow type</a>	<a href="#">Date</a>	<a href="#">Source</a>	<a href="#">Previous Type</a>	<a href="#">Designation</a>	<a href="#">Related References</a>	<a href="#">Value</a>
			<a href="#">Rural Settlement</a>	<a href="#">Village</a>	<a href="#">1999</a>	<a href="#">(Google Earth, 1999)</a>	<a href="#">Planned Fields</a>	<a href="#">none</a>	<a href="#">None</a>	
		<a href="#">Previous</a>				1966)	<a href="#">Fields</a>			

[Area Map](#)

<a href="#">Reference</a>	<a href="#">Name</a>	<a href="#">Broad type</a>	<a href="#">Narrow type</a>	<a href="#">Date</a>	<a href="#">Source</a>	<a href="#">Previous Type</a>	<a href="#">Designation</a>	<a href="#">Related References</a>	<a href="#">Value</a>
		<a href="#">Rural Settlement</a>		<a href="#">1999</a>	<a href="#">(Google Earth, 1999)</a>		<a href="#">none</a>	<a href="#">None</a>	



Milton	Rural Settlement	Village	medieval	(Smith, 1802)	Conservation Area	HE098	Medium
--------	------------------	---------	----------	---------------	-------------------	-------	--------

HLCA52

Deleted Cells

Inserted Cells

[Area Map](#)

[Reference](#)   [Name](#)   [Broad type](#)   [Narrow type](#)   [Date](#)   [Source](#)   [Previous Type](#)   [Designation](#)   [Related References](#)   [Value](#)


[Rural Settlement](#)   [Village](#)   [1999](#)   [\(Google Earth, 1999\)](#)   [Planned Fields](#)   [none](#)   [None](#)

[Previous](#)

[love every drop anglian](#)   [HLCA53](#)   [Abbots Way](#)   [Housing allotment](#)   [Negligibl and Priory](#)   [Estate s](#)   [e](#)  
[Related Road](#)



[Area Map](#)

Reference	Name	Broad type	Narrow type	Date	Source	Previous Type	Designation	Related References	Value
		<a href="#">Rural Settlement</a>		<a href="#">1999</a>	<a href="#">(Google Earth, 1999)</a>		<a href="#">none</a>	<a href="#">None</a>	
	<a href="#">Horningsea Garden Centre</a>	<a href="#">Commerce</a>	<a href="#">Garden Centre</a>	<a href="#">1999</a>	<a href="#">(Google Earth, 1999)</a>	<a href="#">Amalgamated Fields</a>	<a href="#">none</a>	<a href="#">None</a>	<a href="#">Negligible</a>
<a href="#">HLCA54</a>									
<a href="#">HLCA55</a>	<a href="#">South</a>								<a href="#">Low</a>



[Area Map](#)



[References](#)

<a href="#">Reference</a>	<a href="#">Name</a>	<a href="#">Broad type</a>	<a href="#">Narrow type</a>	<a href="#">Date</a>	<a href="#">Source</a>	<a href="#">Previous Type</a>	<a href="#">Designation</a>	<a href="#">Related References</a>	<a href="#">Value</a>
	<a href="#">Previous Waterbeach</a>	<a href="#">Rural Settlement</a>	<a href="#">Village</a>	<a href="#">1999</a>	<a href="#">(Google Earth, 1999)</a>	<a href="#">Planned Fields</a>	<a href="#">none</a>	<a href="#">None</a>	

[Area Map](#)

<u>Reference</u>	<u>Name</u>	<u>Broad type</u>	<u>Narrow type</u>	<u>Date</u>	<u>Source</u>	<u>Previous Type</u>	<u>Designation</u>	<u>Related References</u>	<u>Value</u>
		<u>Rural Settlement</u>		<u>1999</u>	<u>(Google Earth, 1999)</u>		<u>none</u>	<u>None</u>	



<u>HLCA53</u>	<u>Abbots Way and Priory Road</u>		<u>Housing Estate</u>		<del><u>(Google Earth, 1999)</u></del>	<u>allotments</u>	<u>None</u>	<u>None</u>	<u>Negligible</u>
---------------	-----------------------------------	--	-----------------------	--	--	-------------------	-------------	-------------	-------------------

Deleted Cells  
 Deleted Cells

[Area Map](#)

[Reference](#) [Name](#) [Broad type](#) [Narrow type](#) [Date](#) [Source](#) [Previous Type](#) [Designation](#) [Related References](#) [Value](#)

Rural  
Settlement

Village

1999

(Google Earth, 1999)

Planned  
Fields

none

None

[Previous](#)



HLCA546

Horningsea  
Garden  
RAF  
Centre  
Waterbeach

Commerce  
Defence

Garden  
Centre  
Military  
Airfield

1999  
1945

(Google Earth,  
1999  
1945)

Amalgam  
ated  
Open  
Fields  
System

none

<a href="#">Area-Map</a>	<a href="#">Reference</a>	<a href="#">Name</a>	<a href="#">Broad-type</a>	<a href="#">Narrow-type</a>	<a href="#">Date</a>	<a href="#">Source</a>	<a href="#">Previous Type</a>	<a href="#">Designation</a>	<a href="#">Related References</a>	<a href="#">Value</a>
			Rural Settlement	Village	1999	(Google Earth, 1999)	Planned	none	None	

love every drop  
 anglianwater

anglianwater

Related Value  
References



HLCA55 South Waterbeach Fields (Google Earth, 1999) None Low



HLCA57 Stow cum Quy Planned Fields

Inserted Cells  
 Inserted Cells

[Area-Map](#)

[Reference](#) [Name](#) [Broad-type](#) [Narrow-type](#) [Date](#) [Source](#) [Previous Type](#) [Designation](#) [Related References](#) [Value](#)



[Rural Settlement](#) [Village](#)

RAF Waterbeach [Rural Defence Settlement](#) [Military Airfield Village](#) [1945](#) [188](#) (Google Earth, 1945 Ordnance Survey, 1888) [Open Field System](#) [none](#) [Conservation Area](#) [None](#) [Low](#) [HE099](#) [Medium](#)

[HLCA568](#)

[HLCA59](#) [Horningsea](#) [1810](#) (Smith, Plan of the parish of Horningsea, made on the enclosure, 1810 (Maps.Ms.Plans.35), 1810) [Conservation Area](#) [HE097](#) [Medium](#)

- Deleted Cells
- Deleted Cells
- Inserted Cells



[Area-Map](#)

[Reference](#) [Name](#) [Broad-type](#) [Narrow-type](#) [Date](#) [Source](#) [Previous Type](#) [Designation](#) [Related References](#) [Value](#)

[Rural Settlement](#) [Village](#) 1999 none



HLCA57 Stow cum (Google Earth, 1999)



Planned



HLCA5860

[Waterbeach Bait's Bite Lock](#) [Rural Settlement](#) [Enclosed Fields](#) [Village](#) [Planned](#) 1887 (Ordnance Survey, 1885) [Meadow Conservation Area](#) HE099 [Open Field System / Extractive Pit](#) 5 Medium

Deleted Cells

Quays Fields





<a href="#">Area Map</a>	<a href="#">Reference</a>	<a href="#">Name</a>	<a href="#">Broad type</a>	<a href="#">Narrow type</a>	<a href="#">Date</a>	<a href="#">Source</a>	<a href="#">Previous Type</a>	<a href="#">Designation</a>	<a href="#">Related References</a>	<a href="#">Value</a>
			Rural Settlement	Village	1999	(Google Earth, 1999)		none	None	
									anglianWater	
									Related References	Value
									None	Low



<a href="#">Area-Map</a>	<a href="#">Reference</a>	<a href="#">Name</a>	<a href="#">Broad-type</a>	<a href="#">Narrow-type</a>	<a href="#">Date</a>	<a href="#">Source</a>	<a href="#">Previous Type</a>	<a href="#">Designation</a>	<a href="#">Related References</a>	<a href="#">Value</a>
			Rural Settlement	Village	1999			none		

love every drop anglian  
 Related Value  
 References



HLCA59 Horningsea

1810 (Smith, Plan of the  
 of Horningsea, n  
 the enclosure,  
 1810  
 (Maps-Ms.Plans-  
 1810)



HLCA61 Fen Ditton

1807 (Williar  
 Smith,...

- Deleted Cells
- Deleted Cells
- Inserted Cells
- Inserted Cells



Baits Orna Planne 188 (Ordn Mea Cons HE09 Medium  
 Bite ment d 56 nce dow, erva 5Non  
 Lock a FieldsL Survey, Ope tio-n e  
 Quy Enclo andsca 18856) n Area non  
 Hall sureti pe Field e  
 Park on Park Syst e  
 and em / (but  
 Extra valu  
 ctive e  
 PitPa equi  
 sture vale  
 nt to  
 desi  
 gnat  
 ed)

HLCA602

- Deleted Cells

[Area Map](#)

[Reference](#) [Name](#) [Broad-type](#) [Narrow-type](#) [Date](#) [Source](#) [Previous Type](#) [Designation](#) [Related References](#) [Value](#)

Rural Settlement Village none

~~love every drop anglia~~


[HLCA63](#) [Existing](#) [Civic](#) [Waterworks](#) [1901](#) [\(Ordnance Survey\)](#) [Related](#) [Planned](#) [Value](#)  
[Negligible](#) [References](#)



[HLCA61](#) [Fen Ditton](#) [1807](#) [\(William Collinson; G. J. Smith, 1890\)](#) [Conservation Area](#) [HE096](#) [Medium](#)



[Area Map](#)

	<a href="#">Reference</a>	<a href="#">Name</a>	<a href="#">Broad type</a>	<a href="#">Narrow type</a>	<a href="#">Date</a>	<a href="#">Source</a>	<a href="#">Previous Type</a>	<a href="#">Designation</a>	<a href="#">Related References</a>	<a href="#">Value</a>
								none	None	
	HLCA62	Quy Hall Parkland	Ornamentation	Landscape Park	1886	(Ordnance Survey, 1886)	-Open Field System/ Pasture	none (but value equivalent to designated)	None	Medium

<a href="#">Area Map</a>	<a href="#">Reference</a>	<a href="#">Name</a>	<a href="#">Broad type</a>	<a href="#">Narrow type</a>	<a href="#">Date</a>	<a href="#">Source</a>	<a href="#">Previous Type</a>	<a href="#">Designation</a>	<a href="#">Related References</a>	<a href="#">Value</a>
								none	None	

Cambridge Waste Water Treatment Relocation Project  
 Historic Landscape Characterisation

<a href="#">Area Map</a>	<a href="#">Reference</a>	<a href="#">Name</a>	<a href="#">Broad type</a>	<a href="#">Narrow type</a>	<a href="#">Date</a>	<a href="#">Source</a>	<a href="#">Previous Type</a>	<a href="#">Designation</a>	<a href="#">Related References</a>	<a href="#">Value</a>
	HLCA63	Existing CWWT	Civic Amenities	Waterworks	1901	(Ordnance Survey, 1904)	Planned Field System	none	None	Negligible
	HLCA64	King's Hedges	Urban Settlement	Suburb	1938	(Ordnance Survey, 1938)	Planned Fields	none	None	Low



[Area Map](#)

<a href="#">Reference</a>	<a href="#">Name</a>	<a href="#">Broad type</a>	<a href="#">Narrow type</a>	<a href="#">Date</a>	<a href="#">Source</a>	<a href="#">Previous Type</a>	<a href="#">Designation</a>	<a href="#">Related References</a>	<a href="#">Value</a>
							none	None	

Cambridge Waste Water Treatment Relocation Project  
Historic Landscape Characterisation

[Area Map](#)



<a href="#">Reference</a>	<a href="#">Name</a>	<a href="#">Broad type</a>	<a href="#">Narrow type</a>	<a href="#">Date</a>	<a href="#">Source</a>	<a href="#">Previous Type</a>	<a href="#">Designation</a>	<a href="#">Related References</a>	<a href="#">Value</a>
HLCA65	Dismantled Railway	Unimproved Land	Scrub	1966	(Ordnance Survey, 1966)	Railway	none	None	Low



HLCA66	A14 Transport Corridor	Road Transport	Trunk Road	1985	(Google Earth, 1985)	Unknown	none	None	Negligible
--------	------------------------	----------------	------------	------	----------------------	---------	------	------	------------





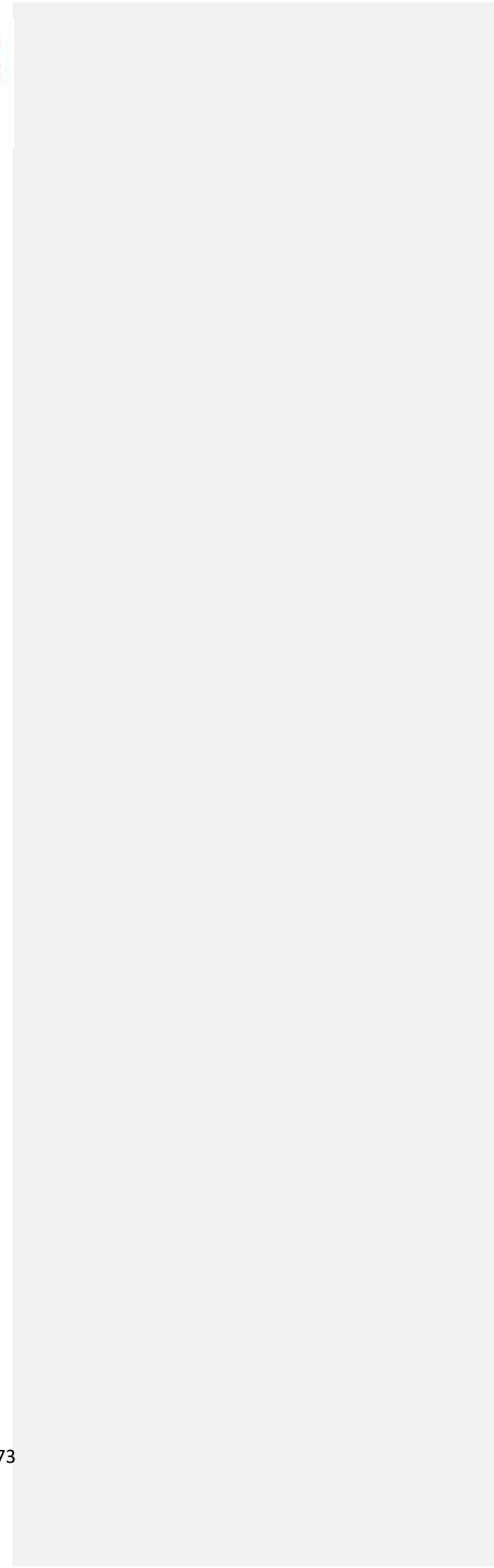
[Area Map](#)

<a href="#">Reference</a>	<a href="#">Name</a>	<a href="#">Broad type</a>	<a href="#">Narrow type</a>	<a href="#">Date</a>	<a href="#">Source</a>	<a href="#">Previous Type</a>	<a href="#">Designation</a>	<a href="#">Related References</a>	<a href="#">Value</a>
	Cambridge Waste Water Treatment Relocation Project						none	None	
	Historic Landscape Characterisation								anglian
<b>HLCA Reference</b>	<b>Value</b>	<b>Scoping Decision</b>	<b>Construction Phase - Temporary</b>	<b>Construction Phase - Permanent</b>	<b>Operation Phase</b>				
<b>description</b>	<b>Scoped?</b>	<b>Scoped</b>	<b>Impact</b>	<b>Impact description</b>	<b>Impact</b>	<b>Impact</b>	<b>Effect</b>	<b>Impact</b>	
	<b>Impact</b>	<b>Impact</b>	<b>Effect</b>						

love every drop  
anglianwater



C  
a  
m  
b  
r  
i  
d  
g  
e  
W  
a  
s  
t  
e  
W  
a  
t  
e  
r  
F





[Area Map](#)

<a href="#">Reference</a>	<a href="#">Name</a>	<a href="#">Broad type</a>	<a href="#">Narrow type</a>	<a href="#">Date</a>	<a href="#">Source</a>	<a href="#">Previous Type</a>	<a href="#">Designation</a>	<a href="#">Related References</a>	<a href="#">Value</a>
	Cambridge Waste Water Treatment Relocation Project						none	None	
	Historic Landscape Characterisation								anglian
<b>HLCA Reference</b>	<b>Value</b>	<b>Scoping Decision</b>	<b>Construction Phase - Temporary</b>	<b>Construction Phase - Permanent</b>	<b>Operation Phase</b>				
<b>description</b>	<b>Scoped?</b>	<b>Scoped</b>	<b>Impact</b>	<b>Impact description</b>	<b>Impact</b>	<b>Impact</b>	<b>Effect</b>	<b>Impact</b>	
	<b>Impact</b>	<b>Impact</b>	<b>Effect</b>						

love every drop  
anglianwater



anglianwater





[Area Map](#)

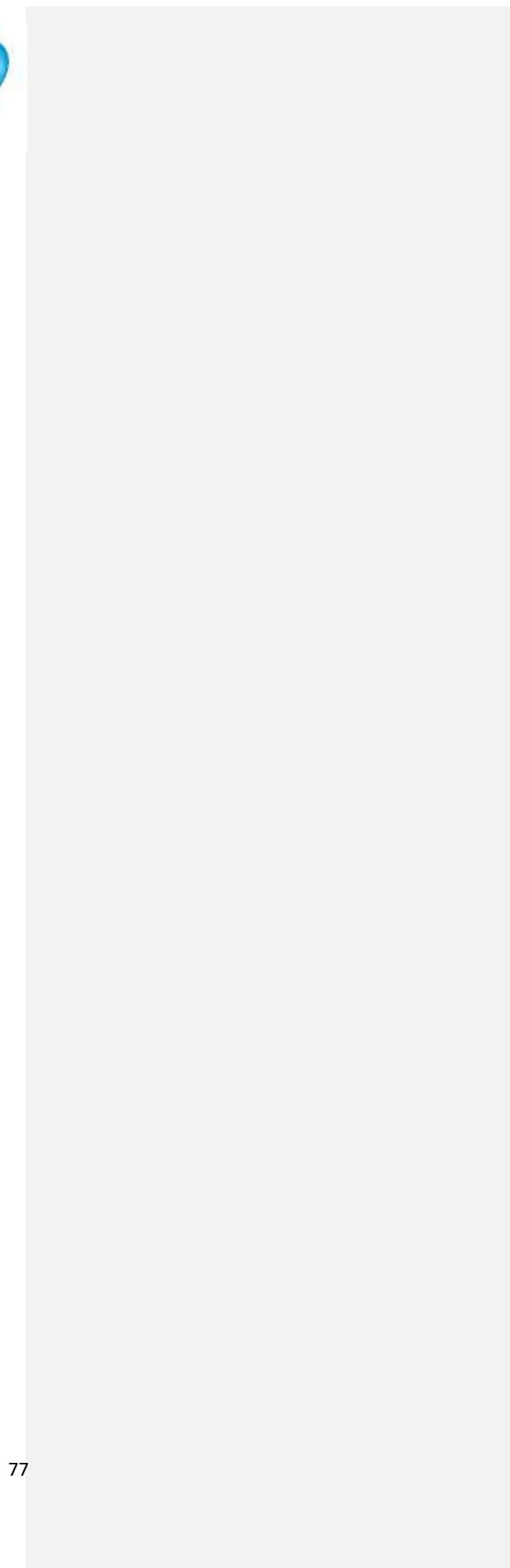
<a href="#">Reference</a>	<a href="#">Name</a>	<a href="#">Broad type</a>	<a href="#">Narrow type</a>	<a href="#">Date</a>	<a href="#">Source</a>	<a href="#">Previous Type</a>	<a href="#">Designation</a>	<a href="#">Related References</a>	<a href="#">Value</a>
	Cambridge Waste Water Treatment Relocation Project						none	None	
	Historic Landscape Characterisation								anglian
<b>HLCA Reference</b>	<b>Value</b>	<b>Scoping Decision</b>	<b>Construction Phase - Temporary</b>	<b>Construction Phase - Permanent</b>	<b>Operation Phase</b>				
<b>description</b>	<b>Scoped?</b>	<b>Scoped</b>	<b>Impact</b>	<b>Impact description</b>	<b>Impact</b>	<b>Impact</b>	<b>Effect</b>	<b>Impact</b>	
	<b>Impact</b>	<b>Impact</b>	<b>Effect</b>						


love, ever8 drop c;;)

F



G  
a  
m  
b  
r  
f  
i  
d  
g  
e  
W  
a  
s  
t  
e  
W  
a  
t  
e  
r  
F



Area Map	Reference	Name	Broad type	Narrow type	Date	Source	Previous Type	Designation	Related References	Value Type
	HLCA67	Stow cum Quay Fen	Enclosure	Planned Fields	1840	(Smith, 1840)	Wetland	none	None	Low



[Area Map](#)

[Reference](#) [Name](#) [Broad type](#) [Narrow type](#) [Date](#) [Source](#) [Previous Type](#) [Designation](#) [Related References](#) [Value](#)

								<a href="#">none</a>	<a href="#">None</a>	
Cambridge Waste Water Treatment Relocation Project										
Historic Landscape Characterisation										
<b>HLCA Reference</b>	<b>Value</b>	<b>Scoping Decision</b>	<b>Construction Phase</b>	<b>Construction Phase</b>	<b>Permanent</b>	<b>Operation Phase</b>				
		<b>Scoped?</b>	<b>Scoped</b>	<b>Impact description</b>	<b>Impact</b>	<b>Impact</b>	<b>Effect</b>	<b>Impact</b>		
		<b>Impact</b>	<b>Impact</b>	<b>Effect</b>						

love every drop  
anglianwater

anglian

Temporary

Scoped?	Scoped out reason	Impact description	Impact description	Impact magnitude	Impact Type	Effect magnitude	Impact description	Impact magnitude	Impact Type	Effect magnitude
---------	-------------------	--------------------	--------------------	------------------	-------------	------------------	--------------------	------------------	-------------	------------------

C  
a  
m  
b  
r  
i  
d  
g  
e  
W  
a  
s  
t  
e  
W  
a  
t  
e  
r  
F

---

HLCA01	Low	Out	No	Temporary	=	=	=	=	=	=	=	=
--------	-----	-----	----	-----------	---	---	---	---	---	---	---	---

---

[Area Map](#)

[Reference](#) [Name](#) [Broad type](#) [Narrow type](#) [Date](#) [Source](#) [Previous Type](#) [Designation](#) [Related References](#) [Value](#)

[none](#)

[None](#)

~~love every drop c;;)~~

Cambridge Waste Water Treatment Relocation Project

Historic Landscape Characterisation

anglian

~~HLCA Value Scoping Decision Construction Construction Phase – Permanent Operation Phase  
 Reference Phase –  
 Temporary  
 Scoped? Scoped Impact Impact description Impact Impact Effect Impact  
 description Impact Impact Effect~~

physical impact to the HLCA, the setting of the HLCA does not extend to the proposed WWTP.

impacts to HLCAs have not been considered within the ES

HLCA02	Low	Out	No physical impact to the HLCA,	Temporary impacts to HLCAs have not been	=	=	=	=	=	=	=	=
					CWWTP	Amenities	1904)	Field				e

C  
a  
m  
b  
r  
i  
d  
g  
e  
W  
a  
s  
t  
e  
W  
a  
t  
e  
r  
F





[Area Map](#)

[Reference](#) [Name](#) [Broad type](#) [Narrow type](#) [Date](#) [Source](#) [Previous Type](#) [Designation](#) [Related References](#) [Value](#)

Cambridge Waste Water Treatment Relocation Project  
 Historic Landscape Characterisation

none None  
 ioue, euer8 drop c;;)  
 anglian

HLCA Value Scoping Decision Construction Construction Phase - Permanent Operation Phase  
 Reference Phase -  
 Temporary

Scoped? Scoped Impact Impact description Impact Impact Effect Impact  
 description Impact Impact Effect

[Area Map](#) [Reference](#) [Name](#) [Broad type](#) [Narrow type](#) [Date](#) [Source](#) [Previous Type](#) [Designation](#)

- Deleted Cells
- Deleted Cells
- Deleted Cells
- Deleted Cells
- Deleted Cells
- Deleted Cells
- Deleted Cells
- Deleted Cells
- Deleted Cells
- Deleted Cells
- Deleted Cells
- Deleted Cells

C  
a  
m  
b  
r  
i  
d  
g  
e  
W  
a  
s  
t  
e  
W  
a  
t  
e  
r





[Area Map](#)

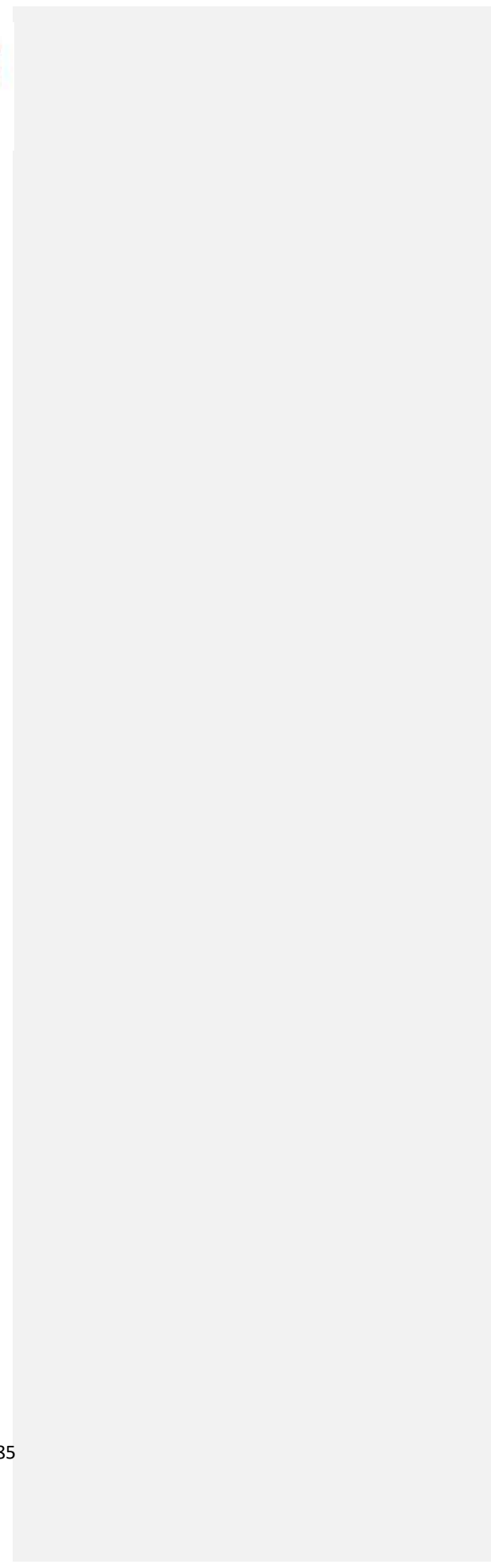
<a href="#">Reference</a>	<a href="#">Name</a>	<a href="#">Broad type</a>	<a href="#">Narrow type</a>	<a href="#">Date</a>	<a href="#">Source</a>	<a href="#">Previous Type</a>	<a href="#">Designation</a>	<a href="#">Related References</a>	<a href="#">Value</a>
	Cambridge Waste Water Treatment Relocation Project						none	None	
	Historic Landscape Characterisation								anglian
<b>HLCA Reference</b>	<b>Value</b>	<b>Scoping Decision</b>	<b>Construction Phase</b>	<b>Construction Phase</b>	<b>Permanent</b>				<b>Operation Phase</b>
		<b>Scoped?</b>	<b>Scoped</b>	<b>Impact</b>	<b>Impact description</b>	<b>Impact</b>	<b>Impact</b>	<b>Effect</b>	<b>Impact</b>
<b>description</b>		<b>Impact</b>	<b>Impact</b>	<b>Effect</b>					

	HLCA694	Lode King's Hedges	Waterway Settlement			1938	Survey		Unknown Fields
							-1938]		

0.85 540  
 470 340

- Deleted Cells
- Deleted Cells
- Deleted Cells
- Deleted Cells
- Deleted Cells
- Deleted Cells
- Deleted Cells
- Deleted Cells
- Deleted Cells
- Deleted Cells
- Deleted Cells

C  
a  
m  
b  
r  
f  
i  
d  
g  
e  
W  
a  
s  
t  
e  
W  
a  
t  
e  
r  
F



HLCA65 Dismantled Unimprove Scrub 1966 (Ordnance Survey, Railway Low



[Area Map](#)

<a href="#">Reference</a>	<a href="#">Name</a>	<a href="#">Broad type</a>	<a href="#">Narrow type</a>	<a href="#">Date</a>	<a href="#">Source</a>	<a href="#">Previous Type</a>	<a href="#">Designation</a>	<a href="#">Related References</a>	<a href="#">Value</a>
	Cambridge Waste Water Treatment Relocation Project						none	None	
	Historic Landscape Characterisation								anglian
<b>HLCA Reference</b>	<b>Value</b>	<b>Scoping Decision</b>	<b>Construction Phase - Temporary</b>	<b>Construction Phase - Permanent</b>	<b>Operation Phase</b>				
<b>description</b>	<b>Scoped?</b>	<b>Scoped</b>	<b>Impact</b>	<b>Impact description</b>	<b>Impact</b>	<b>Impact</b>	<b>Effect</b>	<b>Impact</b>	
	Railway	d Land			1966)				



C  
a  
m  
b  
r  
f  
i  
d  
g  
e  
W  
a  
s  
t  
e  
W  
a  
t  
e  
r  
F





[Area Map](#)

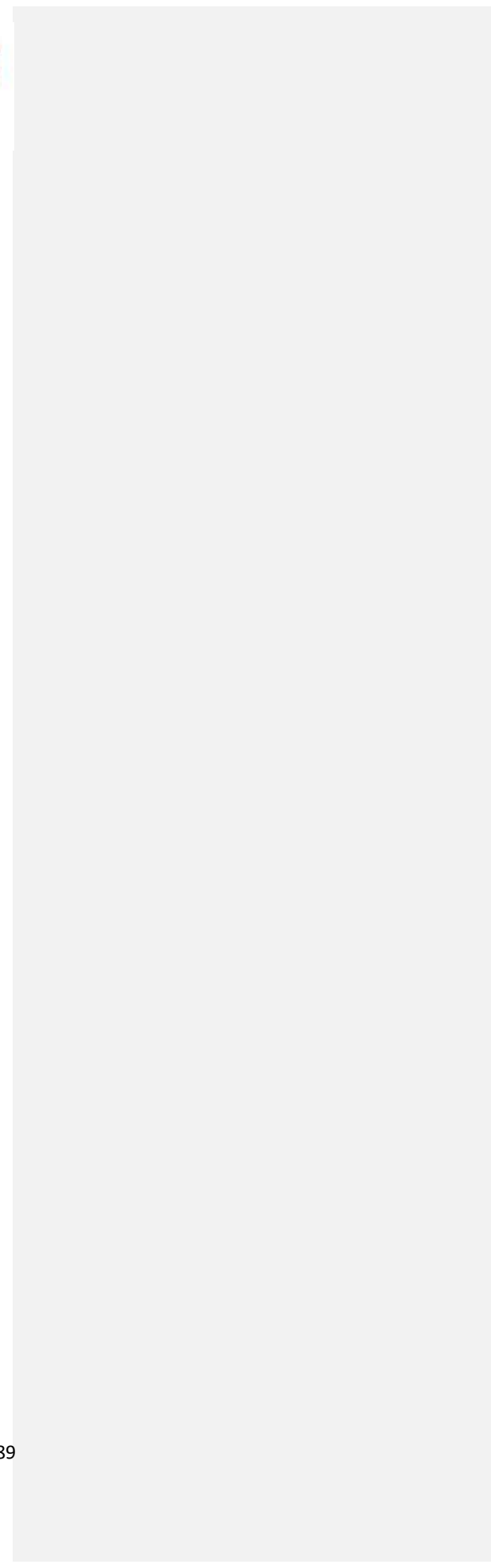
<a href="#">Reference</a>	<a href="#">Name</a>	<a href="#">Broad type</a>	<a href="#">Narrow type</a>	<a href="#">Date</a>	<a href="#">Source</a>	<a href="#">Previous Type</a>	<a href="#">Designation</a>	<a href="#">Related References</a>	<a href="#">Value</a>
	Cambridge Waste Water Treatment Relocation Project						none	None	
	Historic Landscape Characterisation								anglian
<b>HLCA Reference</b>	<b>Value</b>	<b>Scoping Decision</b>	<b>Construction Phase - Temporary</b>	<b>Construction Phase - Permanent</b>	<b>Operation Phase</b>				
<b>description</b>	<b>Scoped?</b>	<b>Scoped</b>	<b>Impact</b>	<b>Impact description</b>	<b>Impact</b>	<b>Impact</b>	<b>Effect</b>	<b>Impact</b>	

[Transport Corridor](#)

[Transport](#)

[e](#)

C  
a  
m  
b  
r  
f  
i  
d  
g  
e  
W  
a  
s  
t  
e  
W  
a  
t  
e  
r  
F



HLCA67 Stow cum Enclosure Planned Fields 1840 (Smith, 1840) Wetland Low



[Area Map](#)

<a href="#">Reference</a>	<a href="#">Name</a>	<a href="#">Broad type</a>	<a href="#">Narrow type</a>	<a href="#">Date</a>	<a href="#">Source</a>	<a href="#">Previous Type</a>	<a href="#">Designation</a>	<a href="#">Related References</a>	<a href="#">Value</a>
	Cambridge Waste Water Treatment Relocation Project						none	None	
	Historic Landscape Characterisation								anglian
<b>HLCA Reference</b>	<b>Value</b>	<b>Scoping Decision</b>	<b>Construction Phase - Temporary</b>	<b>Construction Phase - Permanent</b>	<b>Operation Phase</b>				
<b>description</b>	<b>Scoped?</b>	<b>Scoped</b>	<b>Impact</b>	<b>Impact description</b>	<b>Impact</b>	<b>Impact</b>	<b>Effect</b>	<b>Impact</b>	
	<a href="#">Quy Fen South</a>								

love, ever8 drop c;;)

C  
a  
m  
b  
r  
f  
i  
d  
g  
e  
W  
a  
s  
t  
e  
W  
a  
t  
e  
r  
F





[Area Map](#)

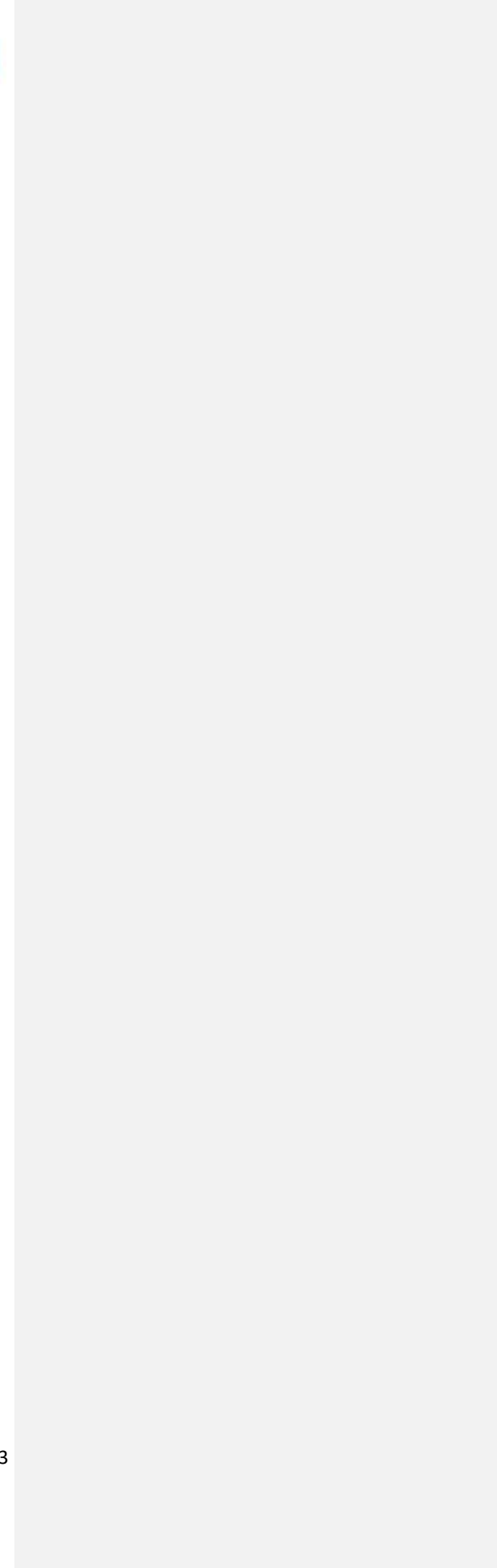
<a href="#">Reference</a>	<a href="#">Name</a>	<a href="#">Broad type</a>	<a href="#">Narrow type</a>	<a href="#">Date</a>	<a href="#">Source</a>	<a href="#">Previous Type</a>	<a href="#">Designation</a>	<a href="#">Related References</a>	<a href="#">Value</a>
	Cambridge Waste Water Treatment Relocation Project						none	None	
	Historic Landscape Characterisation								anglian
<b>HLCA Reference</b>	<b>Value</b>	<b>Scoping Decision</b>	<b>Construction Phase - Temporary</b>	<b>Construction Phase - Permanent</b>	<b>Operation Phase</b>				
<b>description</b>	<b>Scoped?</b>	<b>Scoped</b>	<b>Impact</b>	<b>Impact description</b>	<b>Impact</b>	<b>Impact</b>	<b>Effect</b>	<b>Impact</b>	

[East](#)

[Fields](#)



C  
a  
m  
b  
r  
i  
d  
g  
e  
w  
a  
s  
t  
e  
w  
a  
t  
e  
r  
f  
r





HLCA Reference	Value	Scoping Decision		Construction Phase – Temporary Impact	Construction Phase – Permanent				Operation Phase			
		Scoped?	Scoped		Impact description	Impact	Impact	Effect	Impact description	Impact	Impact	Effect

### 1.3 Impact to Historic Landscape Character Areas

HLCA	Value	Scoped?	Scoped out reason	Temporary Impact description	Impact description	Impact magnitude	Impact Type	Effect magnitude	Impact description	Impact magnitude	Impact Type	Effect magnitude
HLCA01	Low	Out	No physical impact to the HLCA, the setting of the HLCA does not extend to the proposed WWTP.	Temporary impacts to HLCAs have not been considered within the ES	=	=	=	=	=	=	=	=



HLCA Reference	Value	Scoping Decision		Construction Phase – Temporary Impact	Construction Phase – Permanent				Operation Phase		
		Scoped?	Scoped Effect		Impact description	Impact	Impact	Effect	Impact description	Impact	Impact
HLCA05	Low	Out	No physical impact to the HLCA, the setting of the HLCA does not extend to Temporary								
			impacts to HLCAs have not been considered within the ES								



HLCA Reference_	Value	Scoping Decision		Construction Phase – Temporary Impact Effect	Construction Phase – Permanent			Operation Phase	
		Scoped? Impact	Scoped Impact		Impact description	Impact	Impact	Effect	Impact description

~~out description magnitude Type magnitude magnitude Type magnitude reason~~

~~the proposed WWTP.~~

HLCA06	Low	Out	No physical impact to the HLCA, the setting of the HLCA does not extend to the proposed WWTP.	Temporary impacts to HLCAs have not been considered within the ES	-	-	-	-	-	-	-	-
--------	-----	-----	---	---	---	---	---	---	---	---	---	---

out description magnitude Type magnitude magnitude Type magnitude reason

the proposed WWTP.

<u>HLCA06</u>	<u>Low</u>	<u>Out</u>	<u>No physical impact to the HLCA, the setting of the HLCA does not extend to the proposed WWTP.</u>	<u>Temporary impacts to HLCAs have not been considered within the ES</u>	<u>=</u>	<u>=</u>	<u>=</u>	<u>=</u>	<u>=</u>	<u>=</u>	<u>=</u>	<u>=</u>
---------------	------------	------------	--	--	----------	----------	----------	----------	----------	----------	----------	----------

HLCA Reference	Value	Scoping Decision		Construction Phase – Temporary Impact	Construction Phase – Permanent					Operation Phase				
		Scoped?	Scoped Effect		Impact description	Impact	Impact	Effect	Impact description	Impact	Impact			
HLCA07	Low	Out	No	Temporary	-	-	-	-	-	-	-	-	-	-
physical impact to the HLCA, the setting of the HLCA does not extend to the proposed WWTP. - impacts to HLCAs have not been considered within the ES														
HLCA08	Low	Out	No	Temporary	-	-	-	-	-	-	-	-	-	-
physical impact to the HLCA, the setting of the HLCA does not extend to the proposed WWTP. impacts to HLCAs have not been considered within the ES														
HLCA09		Low	Out	No	Temporary	-	-	-	-	-	-	-	-	-
physical impacts to														

out description magnitude Type magnitude magnitude Type magnitude reason

impact to the HLCA, the setting of the HLCA does not extend to the proposed WWTP.  
 HLCAs have not been considered within the ES



HLCA Reference	Value	Scoping Decision		Construction Phase – Permanent			Operation Phase						
		Scoped?	Scoped	Impact	Impact description	Impact	Impact	Effect	Impact description	Impact	Impact	Effect	
HLCA10	Low	Out	No	Temporary physical impact to the HLCA, the setting of the HLCA does not extend to the proposed WWTP.	Temporary impacts to HLCAs have not been considered within the ES	-	-	-	-	-	-	-	
HLCA11	Low	Out	No	No physical impact to the HLCA, the setting of the HLCA does not extend to the proposed WWTP.	proposed WWTP.	HLCA13	Low	Out	No	-	-	-	-
HLCA12	Low	Out	No	Temporary physical impact to the HLCA, the setting of the HLCA does	Temporary impacts to HLCAs have not been considered within the ES	-	-	-	-	-	-	-	
Temporary				- impacts to HLCAs have not been considered within the ES									
<del>out</del>				<del>description magnitude Type magnitude magnitude Type magnitude reason</del>									
not extend to the													

HLCA Reference	Value	Scoping Decision		Construction Phase – Permanent						Operation Phase		
		Scoped?	Reason	Phase – description	Impact	Impact description	magnitude	Type	magnitude	Impact description	magnitude	Type
		Effect										
			physical impact to the HLCA, the setting of the HLCA does not extend to the proposed WWTP.	Temporary	-	-	-	-	-	-	-	- impacts to HLCAs have not been considered within the ES
HLCA14	Negligible	Out	No physical impact to the HLCA, the setting of the HLCA does not extend to the proposed WWTP.	Temporary	-	-	-	-	-	-	-	- impacts to HLCAs have not been considered within the ES
HLCA16	Low	In	-	Temporary	-	The project will install permanent access shafts and a below ground wastewater transfer tunnel in this area. However the overall character will not be altered.	Minimal	adverse	slight			As the HLCA will be altered during construction of the proposed WWTP. Operation of the proposed WWTP is anticipated to result in no further effects.
HLCA15	Low	Out	No physical impact to the HLCA, the setting of the	Temporary	-	HLCA does not extend to the proposed WWTP.						- impacts to HLCAs have not been considered within the ES
			the HLCA, the setting of the	HLCA17	Low	Out	No					physical impact to the HLCA, the setting of the HLCA does not extend to the proposed WWTP.
				Temporary	-	-	-	-	-	-	-	- impacts to HLCAs have not been considered within the ES
HLCA18	High		Impact to the scheduled monument is assessed under HE004 in the Historic Environment Technical Appendix Section (Appendix 13.1, App Doc Ref 5.4.13.1). No impact is anticipated to areas of the HLCA which fall outside the scheduled area for the following reasons: No physical impact to the HLCA, the setting of the HLCA does not extend to the proposed WWTP.									

HLCA Reference	Value	Scoping Decision		Construction Phase – Permanent							Operation Phase			
		Scoped?	Scoped?	Phase – description	Impact description	magnitude	Type	magnitude	Impact description	Impact	Type	magnitude		
		Effect	reason	Temporary										
HLCA19	Low	Out	No physical impact to the HLCA, the setting of the	Temporary	-	-	-	-	-	-	-	-	-	-
HLCA does not extend to the proposed WWTP. - impacts to HLCAs have not been considered within the ES														
HLCA20	Low	Out	No physical impact to the HLCA, the setting of the	Temporary	-	-	-	-	-	-	-	-	-	-
impacts to HLCAs have not been considered within the ES														
HLCA22	Low	In	-	Temporary	Moderate	Adverse	Moderate	As the HLCA will be altered during construction of the proposed WWTP. Operation of the proposed WWTP is anticipated to result in no further effects.			No change	N/A	N/A	
The proposed WWTP and associated landscaping is located within this HLCA. The character of this HLCA consists of planned enclosure and amalgamated fields, dating to the late post-medieval period. There are also earthwork and cropmark remains of ridge and furrow, which indicate earlier, medieval farming practices. This character will be permanently altered by the construction of the proposed WWTP and associated landscaping within it. The open agricultural landscape will be urbanised by the presence of the WWTP. Landscaping will soften the visual intrusion of these elements, however areas subject to landscaping will still be altered from fields. Ridge														
			impact to the HLCA, the setting of the	HLCA21	Low	Out	No physical impact to the HLCA, the setting of the HLCA does not extend to the proposed WWTP.	HLCA does not extend to the proposed WWTP.						
Temporary - - - - - impacts to HLCAs have not been considered within the ES														

Cambridge Waste Water Treatment Relocation Project  
 Historic Landscape Characterisation ~~anglian~~

~~love every drop~~ ;)



out reason	description	HLCA Reference	Value	Scoping Decision		Construction Phase – Permanent		Operation Phase			
				Scoped? Impact	Scoped Impact	Impact Effect	Impact description	Impact magnitude	Impact Type	Effect magnitude	Impact description
				<u>magnitude</u>	<u>Type</u>	<u>magnitude</u>		<u>magnitude</u>	<u>Type</u>	<u>magnitude</u>	
<del>out</del>	<del>description</del>			<del>magnitude</del>	<del>Type</del>	<del>magnitude</del>		<del>magnitude</del>		<del>magnitude</del>	<del>reason</del>

C  
a  
n  
b  
f  
i  
d  
S  
e  
W  
a  
s  
t  
e  
W  
a  
t  
e  
r  
f  
r  
e

HLCA Reference	Value	Scoping Decision	Construction Phase – Temporary	Construction Phase – Permanent	Operation Phase						
		Scoped?_	Scoped	Impact description	Impact						
		Effect	Impact description	Impact	Impact Effect						
HLCA23	Low	Out	No physical impact to the HLCA, the setting of the HLCA does not extend to the proposed WWTP.	Temporary impacts to HLCAs have not been considered within the ES	-	-	-	-	-	-	-
HLCA24	Moderate	Out	No physical impact to the HLCA, the setting of the HLCA does not extend to the proposed WWTP.	Temporary impacts to HLCAs have not been considered within the ES	-	-	-	-	-	-	-

within the footprint of the works. Within the area affected these are predominantly less well-surviving than elsewhere in Horningsea Parish and have been impacted by open-cast mining and the construction of the A14. These changes apply to around half of the HLCA, the remainder of the area would not be directly impacted and therefore better surviving and older ridge and furrow would also remain.





HLCA Reference	Value	Scoping Decision		Construction Phase – Permanent							Operation Phase					
		Scoped?	Reason	Phase – description	Impact description			magnitude	Type	magnitude	Impact description	magnitude	Type	magnitude		
		Effect		Impact												
			physical impact to the HLCA, the setting of the HLCA does not extend to the proposed WWTP.	Temporary	-	-	-	-	-	-	-	-	- impacts to HLCAs have not been considered within the ES			
HLCA30	Negligible	Out	No physical impact to the HLCA, the setting of the HLCA does not extend to the proposed WWTP.	Temporary impacts to HLCAs have not been considered within the ES	-	-	-	-	-	-	-	-	-	-	-	-
HLCA32	Low	Out	No physical impact to the HLCA, the setting of the HLCA does not extend to the proposed WWTP.	Temporary impacts to HLCAs have not been considered within the ES	-	-	-	-	-	-	-	-	-	-	-	-
HLCA31	Low	Out	No physical impact to the HLCA, the setting of the HLCA does not extend to the proposed WWTP.	Temporary	-	-	-	-	-	-	-	-	- impacts to HLCAs have not been considered within the ES			



HLCA Reference	Value	Scoping Decision		Construction Phase – Temporary Impact	Construction Phase – Permanent				Operation Phase						
		Scoped?	Scoped		Impact description	Impact	Impact	Effect	Impact description	Impact	Impact	Effect			
HLCA38	Low	Out	No physical impact to the HLCA, the setting of the HLCA does not extend to the proposed WWTP.	Temporary impacts to HLCAs have not been considered within the ES	-	-	-	-	-	-	-	-	-		
HLCA39	Negligible	Out	No physical impact to the HLCA, the setting of the HLCA does	HLCA41	Negligible	Out	No	Temporary	-	-	-	-	-	-	- impacts to HLCAs have not been considered within the ES
<p>out description magnitude Type magnitude magnitude Type magnitude reason</p>															
HLCA40	Low	Out	extend to the proposed WWTP. No physical impact to the HLCA, the setting of the HLCA does not extend to the proposed WWTP.	Temporary impacts to HLCAs have not been considered within the ES	-	-	-	-	-	-	-	-	-		

Inserted Cells

not



HLCA Reference	Value	Scoping Decision		Construction Phase – Temporary Impact	Construction Phase – Permanent				Operation Phase					
		Scoped?	Scoped Effect		Impact description	Impact	Impact	Effect	Impact description	Impact	Impact			
HLCA47	Negligible	Out	No	Temporary	-	-	-	-	-	-	-	-	-	-
HLCA49	Negligible	Out	No		-	-	-	-	-	-	-	-	-	-

out description magnitude Type magnitude magnitude Type magnitude reason

proposed WWTP.

HLCA48	Negligible	Out	No	Temporary	-	-	-	-	-	-	-	-	-	-
--------	------------	-----	----	-----------	---	---	---	---	---	---	---	---	---	---

HLCA50	Low	Out	No	Temporary	-	-	-	-	-	-	-	-	-	-
--------	-----	-----	----	-----------	---	---	---	---	---	---	---	---	---	---

Deleted Cells  
 Inserted Cells



HLCA Reference	Value	Scoping Decision		Construction Phase – Temporary Impact	Construction Phase – Permanent				Operation Phase				
		Scoped?	Scoped		Impact description	Impact	Impact	Effect	Impact description	Impact	Impact	Effect	
HLCA51	Low	Out	No	Temporary	-	-	-	-	-	-	-	-	-
			No physical impact to the HLCA, the setting of the HLCA does not extend to the proposed WWTP.	Temporary impacts to the HLCA have not been considered within the ES									
HLCA52	Medium	Impact to this conservation area is assessed under HE098 in the Historic Environment Technical Appendix Section (Appendix 13.1, App Doc Ref 5.4.13.1).											
HLCA53	Negligible	Out	No	Temporary	-	-	-	-	-	-	-	-	-
			No physical impact to the HLCA, the setting of the HLCA does not extend to the proposed WWTP.	Temporary impacts to the HLCA have not been considered within the ES									

Inserted Cells

HLCA Reference	Value	Scoping Decision	Scoping Decision		Construction Phase – Permanent							Operation Phase				
			Scoped?	Scoped	Impact	Impact description	Impact	Impact	Impact	Impact	Effect	Impact description	Impact	Impact	Effect	
			out	description	magnitude	Type	magnitude	magnitude	Type	magnitude	reason					
HLCA54	Negligible	Out	No	physical impact to the HLCA, the setting of the HLCA does not extend to the proposed WWTP.	Temporary	-	-	-	-	-	-	-	-	-	-	
HLCA55	Low	Out	No	physical impact to the HLCA, the setting of the HLCA does not extend to the proposed WWTP.												
HLCA56	Low	Out	No	physical impact to the HLCA, the setting of the HLCA does not extend to the proposed WWTP.	Temporary	-	-	-	-	-	-	-	-	-	-	
HLCA57			Low	Out	No	Temporary	-	-	-	-	-	-	-	physical	impacts to impact to	HLCA's have



HLCA    Value    Scoping Decision    Construction    Construction Phase – Permanent    Operation Phase  
~~Reference~~    ~~Phase~~

HLCA62	Medium	In	Temporary impacts to HLCAs have not been considered within the ES	The structures of the WWTP are anticipated to be filtered or screened by vegetation within most of the HLCA. However, the tallest structures of the Proposed WWTP may be visible during winter from parts of the entrance avenue to Quy Hall, especially during winter. This will detract from key views towards the central house in this location.	Minor	Adverse	Neutral	Road and area lighting associated with the proposed WWTP may be visible within the setting of Quy Hall Parkland. As existing streetlighting associated with the A14 and with Stow Road is effectively screened from within the park by topography and vegetation this will introduce light pollution into the rural setting. At the top of the entrance avenue there is a break in vegetation which may allow light from the proposed WWTP to be viewed within the park, this would detract from key views towards the Quy Hall. However, the area lighting will be sensor operated and road lighting	Minor	Inserted Cells to Minor
--------	--------	----	---	--	-------	---------	---------	---	-------	----------------------------



HLCA Value Scoping Decision Construction Construction Phase – Permanent Operation Phase  
~~Reference~~ ~~Phase –~~

is located further from the asset, therefore

<del>Reference</del>	<del>Temporary</del>	<del>Phase –</del>	<del>Temporary</del>	<del>Impact</del>	<del>Impact description</del>	<del>Impact magnitude</del>	<del>Impact Type</del>	<del>Effect magnitude</del>	<del>Impact description</del>	<del>Impact magnitude</del>	<del>Impact magnitude</del>
Scoped?	Scoped out reason	Impact description	Impact description	Impact description	Impact description	Impact magnitude	Impact Type	Effect magnitude	Impact description	Impact magnitude	Impact magnitude

- Inserted Cells
- Inserted Cells
- Inserted Cells
- Inserted Cells
- Inserted Cells
- Inserted Cells
- Inserted Cells
- Inserted Cells
- Inserted Cells
- Inserted Cells
- Inserted Cells
- Inserted Cells
- Inserted Cells
- Inserted Cells



HLCA Reference	Value	Scoping Decision	Construction Phase –	Construction Phase – Permanent	Operation Phase
		of the HLCA does not extend to the proposed WWTP.	considered within the ES		
HLCA58	Medium	Impact to this conservation area is assessed under HE099 in the Historic Environment Technical Appendix Section (Appendix 13.1, App Doc Ref 5.4.13.1)			
HLCA59	Medium	Impact to this conservation area is assessed under HE097 in the Historic Environment Technical Appendix Section (Appendix 13.1, App Doc Ref 5.4.13.1)			
HLCA60	Medium	Impact to this conservation area is assessed under HE095 in the Historic Environment Technical Appendix Section (Appendix 13.1, App Doc Ref 5.4.13.1)			
HLCA61	Medium	Impact to this conservation area is assessed under HE096 in the Historic Environment Technical Appendix Section (Appendix 13.1, App Doc Ref 5.4.13.1)			



HLCA Reference	Value	Scoping Decision	Construction Phase – Temporary	Construction Phase – Permanent					Operation Phase			
		Scoped?	Scoped out reason	Impact description	Impact description	Impact magnitude	Impact Type	Effect magnitude	Impact description	Impact magnitude	Impact Type	Effect magnitude
									this effect will be negligible to minor.			
HLCA63	Negligible	In		Temporary impacts to HLCAs have	experience minor change as a change. result of the scheme. However these changes are not anticipated			heritage value due to its time depth. Neutral	Neutral There is no impact anticipated from the change. operati	No		
HLCA64	Low	Out	No physical impact to the HLCA, the setting of the HLCA does not extend to the proposed WWTP.	Temporary impacts to HLCAs have not been considered within the ES	-	-	-	-	-	-	-	-
				not been considered within the ES The existing WWTP will No	to result in an alteration which would not change the ability to understand the asset as a WWTP and therefore not result in impact to its value. Moreover, the existing WWTP is a modern HLCA with only negligible physical impact to the HLCA, the setting of the HLCA does not extend to the proposed WWTP.				which would result in a change in the value of the asset, as operational changes anticipated are very minor.			
HLCA65	Low	Out	No	Temporary	-	-	-	-	-	-	-	- impacts to HLCAs have not been considered within the ES

Inserted Cells

Inserted Cells

Inserted Cells

Inserted Cells

Inserted Cells

Inserted Cells

Inserted Cells

Inserted Cells

Inserted Cells

Inserted Cells

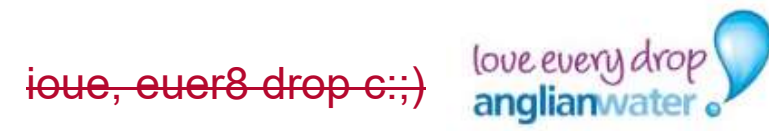
Inserted Cells

Inserted Cells

Inserted Cells







HLCA Reference	Value	Scoping Decision	Construction Phase	Construction Phase – Permanent	Operation Phase
		of the HLCA does not extend to the proposed WWTP.	considered within the ES		

Source: Mott MacDonald (2022)



## Get in touch

You can contact us by:



Emailing at [info@cwwtpr.com](mailto:info@cwwtpr.com)



Calling our Freephone information line on [0808 196 1661](tel:0808 196 1661)



Writing to us at **Freepost: CWWTPR**

~~Visiting our website~~ [DCO application documents and updates on the application on The Planning Inspectorate website:](#)

<https://infrastructure.planninginspectorate.gov.uk/projects/eastern/cambridge-waste-water-treatment-plant-relocation/>